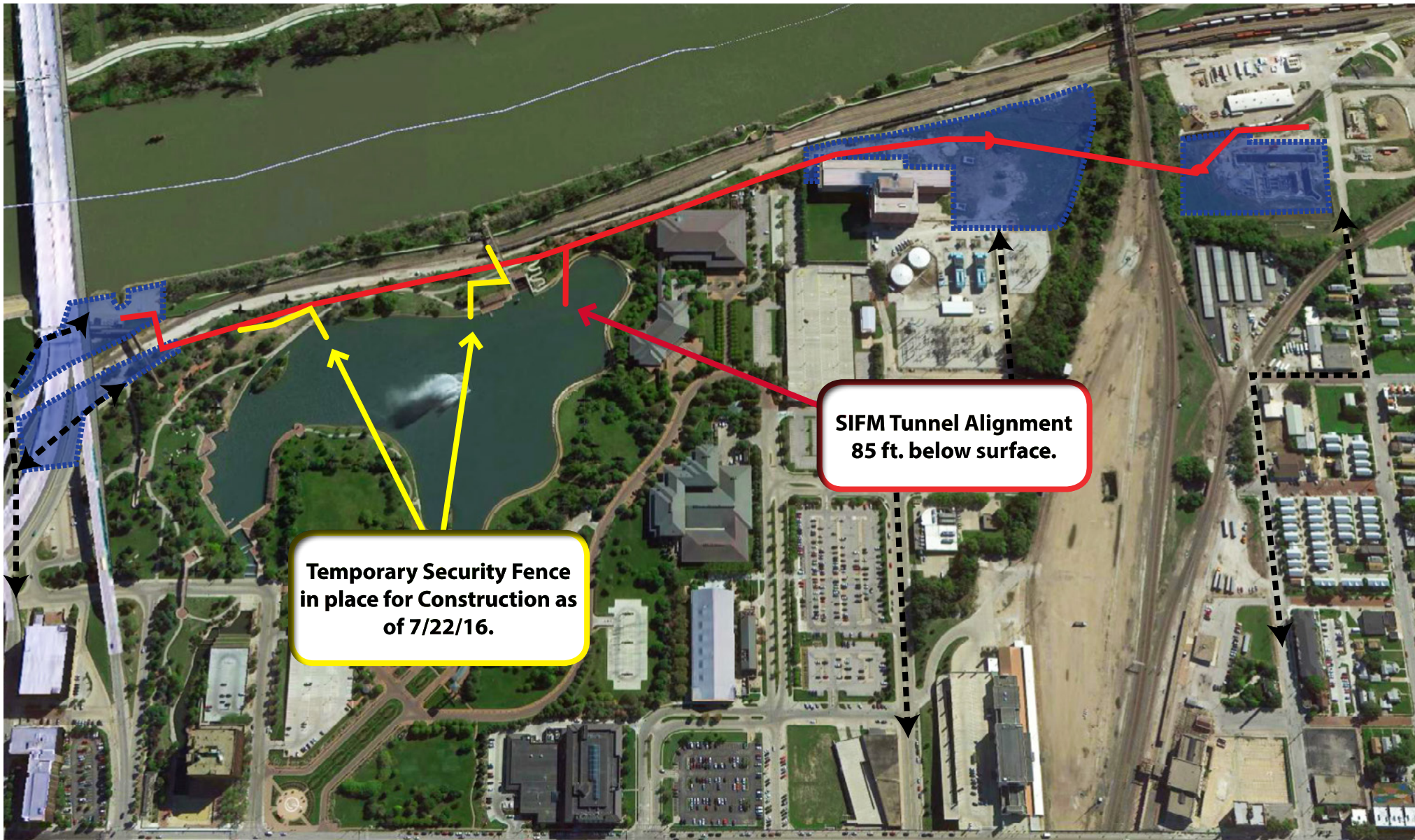




# South Interceptor Force Main: North Segment Alignment & Construction Update

**Update: Due to an unexpected geological formation on the South Interceptor Force Main North Segment project site, construction of the force main has been delayed. Portions of the Heartland of America Park will be closed for extended periods of time. Updates will be made as information is available. For more information, please visit [www.parks.cityofomaha.org](http://www.parks.cityofomaha.org) or call 402-444-5900.**



**SIFM Tunnel Alignment  
85 ft. below surface.**

**Temporary Security Fence  
in place for Construction as  
of 7/22/16.**



## The CSO! Program

The CSO Program is designed to improve the water quality in our streams and rivers. Today, approximately 52 times each year, raw sewage mixed with stormwater flows into the Missouri River and the Papillion Creek. The CSO Program will significantly reduce that number.

## South Interceptor Force Main – North Segment

The existing South Interceptor Force Main has been in continuous operation for approximately 50 years. As it approaches the end of its useful life, the South Interceptor Force Main can no longer be relied upon for continued long term use. The new South Interceptor Force Main, currently under construction, will provide for increased pipe capacity to move wastewater to the Missouri River Wastewater Treatment Plant during heavy rain storms.

Construction of the North Segment of the South Interceptor Force Main began in January of 2015. The North Segment consists of approximately 4,500 feet of 48-inch ductile iron pipe and begins near Lewis and Clark Landing, south of I-480, and continues south to Pierce Street, (see map for reference). A significant portion of the alignment, approximately 2,500 feet, is being constructed in bedrock beneath Heartland of America Park, the ConAgra campus, and the former OPPD Jones Street site to minimize surface disturbances (see profile picture).

A tunnel boring machine (TBM) will bore through the bedrock and construct the tunnel that will contain the new force main. Three shafts are currently being constructed along the alignment to provide access for the TBM and tunnel construction. The TBM will begin boring from Shaft 2 to Shaft 3. Once that section is



### Project Benefits

- **Improve water quality and meet Clean Water Act (CWA) requirements**
- **Replace aging infrastructure to maximize conveyance of flows to the Missouri River Wastewater Treatment Plant during wet weather events**
- **Minimize disruption to businesses and residents**

completed the TBM will bore from Shaft 2 to Shaft 1. The project schedule is updated monthly at the following link: [www.omahacso.com/projects/southinterceptor/](http://www.omahacso.com/projects/southinterceptor/)

The North segment also includes the North Gravity Sewer which conveys flows from the existing Leavenworth Sewer to the new Leavenworth Lift Station.

## FAQs

**Q. What is a force main?**

**A.** A force main is a sewer pipe that is fed by a pump to take flow uphill.

**Q. What is a tunnel boring machine (TBM)?**

**A.** A TBM is a machine with a rotating rock cutting wheel in the front that is used to excavate circular diameter tunnels.

**Q. How will this project affect my neighborhood or business?**

**A.** Construction haul routes will be along Capitol Avenue, South 8th Street, along Riverfront Drive, and 10th Street.

**Q. Will people be able to use Heartland of America Park during construction?**

**A.** During construction the northeast portion of the park will be closed (see aerial). The east half of the park parking lot under I-480 will be closed throughout construction. Efforts to minimize disruption of the park's use by the public will be made. Much of the project will be tunneled beneath the park.

**Q. When will construction of the tunnel begin and when will the project be completed?**

**A.** Construction began in October 2014 and will be completed in early 2017.

**Q. Where can I obtain more information about the Clean Solutions for Omaha Program?**

**A.** Information is available at [www.OmahaCSO.com](http://www.OmahaCSO.com) or the CSO Hotline at 402.341.0235.

## Project Contacts

City of Omaha: (402) 444-5900  
[www.parks.cityofomaha.org](http://www.parks.cityofomaha.org)