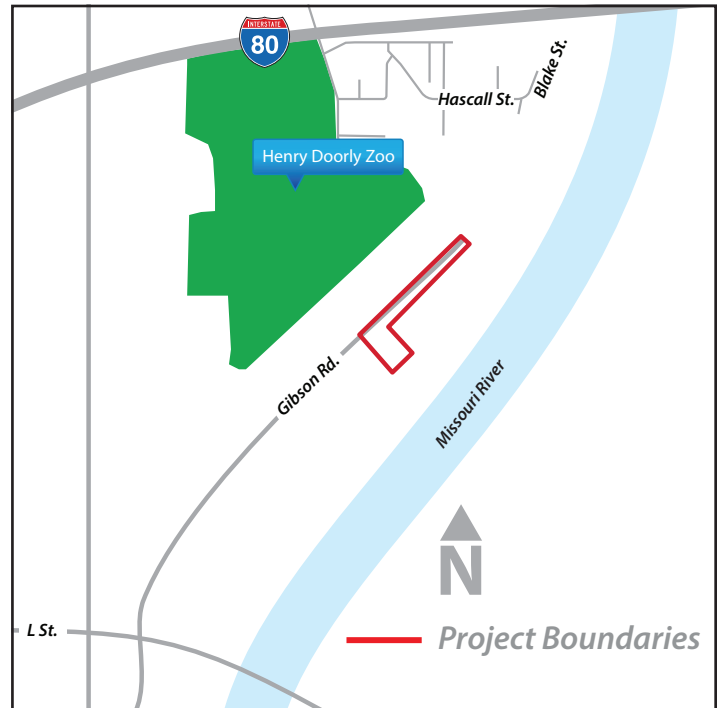


Riverview Lift Station Replacement

New lift stations will provide additional flows to the South Interceptor Force Main (SIFM) and maximize conveyance to the Missouri River Water Resource Recovery Facility (MRWRRF) for neighborhoods and businesses near and around the Henry Doorly Zoo.

The existing Riverview Lift Station was originally constructed in the 1960s as part of the South Interceptor Sewer Project and has the capacity to pump 3.5 million gallons per day (MGD) to the Missouri River Water Resource Recovery Facility (MRWRRF). A new lift station is needed to ensure flows from the Riverview and Grover Street sewers can be reliably pumped into the new South Interceptor Force Main and to maximize conveyance of wet weather flows to the MRWRRF. Lift station capacity is also needed to accommodate the Henry Doorly Zoo cleaning and draining of exhibits and facilities. The new lift station is being designed to have the capacity to pump 7.0 MGD. The location of the new lift station will be just west of its current location adjacent to Gibson Road. Work will include construction of a diversion structure along both the existing Grover and Riverview Street combined sewers to capture flows and convey them to the new Riverview Lift Station.



PROJECT SCHEDULE:

Construction anticipated to begin in fall 2019.



PROJECT LOCATION:

South of the Henry Doorly Zoo, between Gibson Road and the Missouri River.



Omaha's wastewater infrastructure includes a combined sewer system. This system collects rainwater runoff, domestic sewage and industrial wastewater into a pipe conveyance system. In times of wet weather, the system has the potential to reach or exceed capacity causing backups or overflow to nearby streams, creeks and the Missouri River without treatment, causing potential risk to human health, wildlife and the environment. In 2006, in an effort to comply with Environmental Protection Agency and the Federal Clean Water Act (CWA) water quality requirements, the City of Omaha initiated the Clean Solutions for Omaha (CSO) Program to study, plan and update infrastructure to improve and ensure water quality in the community.

As a result, Omaha and its CSO Program are among more than 772 U.S. cities required by federal mandate to improve water quality in local rivers and streams.

IMPROVED WATER QUALITY HAS BENEFITS

Updating infrastructure dating back to the 1860s certainly creates significant challenges, but not without benefit. Aside from improving water quality for the community, projects offer opportunities for additional neighborhood enhancements including new streets, curbs, pedestrian ramps compliant with the American Disabilities Act and driveway approaches. New trees, plants and other green infrastructure features, such as bioswales, rain gardens or ponds, for water retention add beauty and recreational features to some projects.

FUNDING THE PROGRAM

The CSO Program is primarily financed by 30-year revenue bonds issued in increments periodically, as approved by the Mayor and City Council. Sewer fees will be used to pay off the bonds—60% from residential customers, 30% from industrial and commercial users, and 10% from regional customers who use the City's sewer services.

RATEPAYER ASSISTANCE PROGRAM

Recognizing that increased sewer use fees may become a hardship for some residents, in 2011 the City took a proactive role to identify and implement a Ratepayer Assistance Plan to help low and fixed income households. Ratepayers are eligible if they qualify and receive Lower Income Heat and Energy Assistance Program (LIHEAP) benefits from other local utilities. The Ratepayer Assistance Program helps keep administrative costs to a minimum while providing the maximum benefit to those who need it. **For assistance or to apply for Nebraska LIHEAP, call 800-383-4278.**

JOB CREATION: LOCAL LABOR AND MATERIALS

The City and the CSO Program actively encourage local labor and the use of locally purchased or locally available materials. Through the City's Small and Emerging Small Business (SEB) Program, businesses of all sizes have the opportunity to bid or work on CSO Program contracts and projects. **For more information about Small and Emerging Small Business opportunities, call 402-444-5055.**



A City of Omaha Public Works Initiative

Report Street Flooding and Sewer Backups: **402-444-5332**

Contact the CSO Program Hotline: **402-341-0235**

Email: **Info@OmahaCSO.com**