

REACH Plan Room Event

FOREST LAWN SEWER SEPARATION PROJECT

OMAHA PUBLIC WORKS PROJECT NO. 52470

NOVEMBER 27, 2018



A City of Omaha
Public Works Initiative

Welcome

REACH PLAN ROOM EVENT

FOREST LAWN SEWER SEPARATION PROJECT (OPW 52470)

AGENDA

REACH Plan Room Event:
Forest Lawn Sewer Separation

November 27, 2018

- Welcome 1
- CSO Program Overview 2
- SEB Participation 3
- City Processes 4
- Project Information 5
- Contacts 6

Partnering to Assist SEBs

REACH Plan Room Events provide an opportunity for Small & Emerging Small Businesses (SEBs) to learn about bid opportunities and meet with the project design team and other interested contractors.



REACH Program

- REACH is a collaborative effort
- REACH ensures SEBs are ready to bid and capitalize on new projects to *reach strategic goals*
- Free and open to all existing and potential SEBs

[www.omahachamber.org/resources/
business-assistance/reach/](http://www.omahachamber.org/resources/business-assistance/reach/)



CSO Program Overview

The slide features a light blue gradient background. At the bottom, there are several overlapping, wavy lines in various shades of blue, creating a dynamic, flowing effect. The text 'CSO Program Overview' is centered in a bold, dark blue font.

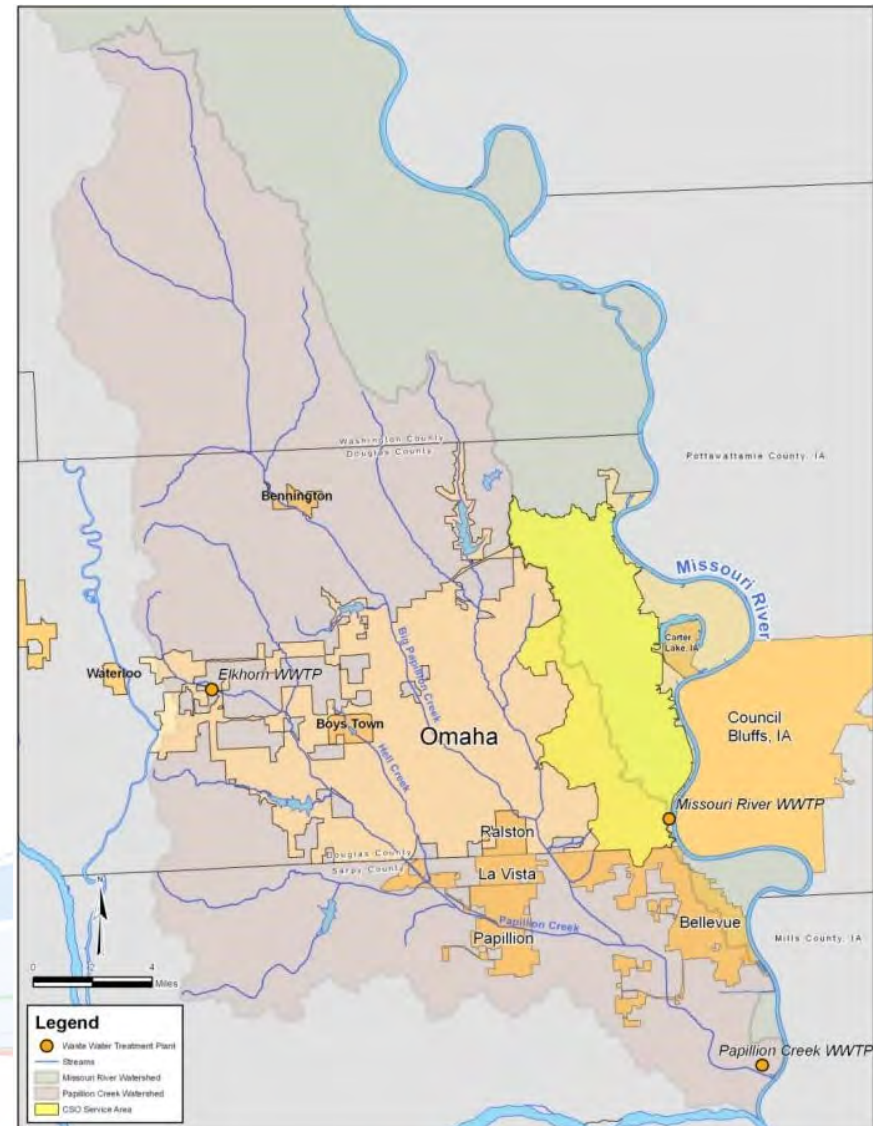
LTCP & Program Goals

The Omaha CSO Program is responsible for improving water quality in area rivers and streams by reducing combined sewage overflows. This is an unfunded federal mandate with three elements—**regulatory compliance**, **economic affordability**, and **community acceptance**.



Regional Service Area

- Two regional treatment plants
- 10 wholesale users
- 300 sq. mile drainage area
- 600,000 service population



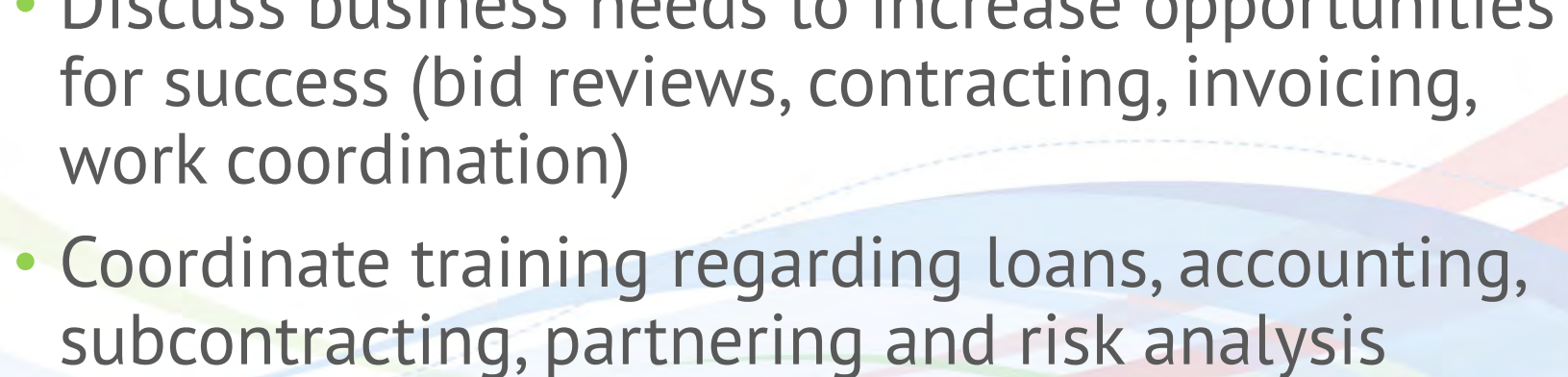
CSO Program Timeline



Small & Emerging Small Business Participation

The slide features a solid blue background. At the bottom, there are several overlapping, wavy lines in various shades of blue, creating a sense of motion and depth. These lines sweep across the width of the slide, with some appearing as solid bands and others as dashed outlines.

The CSO Program coordinates with REACH to:

- Provide information and make connections between SEBs and CSO bid opportunities
 - Provide project bid notifications and contractor outreach events
 - Discuss business needs to increase opportunities for success (bid reviews, contracting, invoicing, work coordination)
 - Coordinate training regarding loans, accounting, subcontracting, partnering and risk analysis
- 

CSO Contracts with SEBs

Businesses of all sizes
have the opportunity to
participate in CSO
Program projects.



During 2016 and 2017, small and emerging small businesses (SEBs)* received nearly **\$11.5M** in construction contracts and subcontracts, which was over **15%** of the total CSO contracts with the City.

To date, the Program has awarded nearly **\$33.5M** in contracts and subcontracts to SEBs, totaling over **16%** of total CSO construction contracts.

* This includes Disadvantaged Business Enterprise (DBE) companies that were engaged on CSO construction projects

City Processes

The slide features a light blue gradient background. At the bottom, there are several overlapping, wavy lines in various shades of blue, creating a sense of motion and depth. The lines are smooth and fluid, with some appearing as solid bands and others as dashed outlines.

SEB Program Supports Business Growth in Omaha

- Stimulates economic growth in targeted areas
- Program is race and gender neutral
- SEBs are categorized by location, employee number and North American Industrial Classification System (NAICS) codes
- To apply for SEB certification, visit

[https://humanrights.cityofomaha.org/
small-and-emerging-small-business-seb](https://humanrights.cityofomaha.org/small-and-emerging-small-business-seb)



Receipt of Bids

Sealed bids for the construction of the **City of Omaha OPW 52470 (CSO) Forest Lawn Sewer Separation** will be received for the City of Omaha by the City Clerk.

Bid Deadline:
**Wednesday, December 19, 2018
11:00 A.M.**

Bids will be opened publicly and read out loud.

THE OFFICE OF
THE CITY CLERK, LC-1
OMAHA/DOUGLAS CIVIC CENTER
1819 FARNAM STREET
OMAHA, NEBRASKA 68183

Quest CDN Service

- Plans and specifications for City projects are distributed electronically using Quest CDN:

<http://bitly.com/2IG2Qp2>

- Contractors need to sign up for a free account at

www.questcdn.com

- Most project bid packets are available for download for \$20
- CD-ROM bid packets are available from the Public Works Department for \$50



The screenshot shows the Quest CDN website interface for Douglas County Purchasing. It displays a table of projects with columns for Post Date/Time, Category, Name, Bid Date/Time, City, County, State, Owner, and Solicitor. A large green 'EXAMPLE' watermark is overlaid on the table.

Post Date/Time	Category	Name	Bid Date/Time	City	County	State	Owner	Solicitor
11/02/18 01:35 PM	Electrical Installation/Construction Fencing/Guardrails/Handrails Geotechnical Heating, Ventilation, Air Conditioning Plumbing Professional/Technical Services Sanitary Sewer (Gravity) Sitework/Excavating and Grading Stormwater Improvements Water/Wastewater Infrastructure	DPW 52049 (CSO): Saddle Creek Retention Treatment Basin	12/13/2018 11:00 AM CST	Omaha	Douglas	NE	Public Works	Douglas County/City of Omaha, NE
11/02/18 03:51 PM	Construction Directional Bore Directional Drilling Grade and Surface Materials, Equipment and Supplies Paving (Asphalt or Concrete) Paving (Highway, Road or Street) Stormwater Improvements	DPW 52470 (CSO): Forest Lawn Creek Inflow Removal and Outfall Storm Sewer	12/19/2018 11:00 AM CST	Omaha	Douglas	NE	Public Works	Douglas County/City of Omaha, NE
11/14/18 08:07 AM	Street/Road Construction and Rep Street/Road Intersection Improvements Street/Road Lane Construction and Traffic Control Signal Systems Concrete Foundation	DPW 53139: 60th and Harrison Street Realignment	12/12/2018 11:00 AM CST	Omaha	Douglas	NE	Public Works	Douglas County/City of Omaha, NE
11/21/18 08:15 AM	Construction Electrical Installation/Construction Electrical and Controls Heating, Ventilation, Air Conditioning Steel Inset Pipe Vial Landfills, Waste Handling Facilities Miscellaneous	DPW 53251 - SOIA Clarifier Improvement	12/18/2018 11:00 AM CST	Omaha	Douglas	NE	Public Works	Douglas County/City of Omaha, NE
10/24/18 08:12 AM	Concrete Foundation Grads, Surface and Bridge	DPW 53407: Omaha Solid Waste Collectors Contract 2021-2030	01/30/2019 11:00 AM CST	Omaha	Douglas	NE	Public Works	Douglas County/City of Omaha, NE

Navigating Quest CDN

DOUGLAS COUNTY PURCHASING

Browse Projects Project Results My Quest Account Messages

Project Number: search Show all 20 per Page Helpful Notes

Click on Project Name to see detailed advertisement

Post Date/Time	Category	Name	Bid Date
11/02/18 01:35 PM	Electrical Installation/Construction Fencing/Guardrails/Handrails Geotechnical Heating, Ventilation, Air Condition Plumbing Professional/Technical Services RFP/RFQ/RFOI Sanitary Sewer (Gravity) Sitework/Excavating and Grading Stormwater Improvements Water/Wastewater Infrastructure	OPW 52049 (CSO): Saddle Creek Retention Treatment Basin	12/19/20
11/02/18 03:51 PM	Construction Directional Bore Directional Drilling Grade and Surface Materials, Equipment and Supplies Paving (Asphalt or Concrete) Paving (Highway, Road or Street) Stormwater Improvements	OPW 52470 (CSO): Forest Lawn Creek Inflow Removal and Outfall Storm Sewer	12/19/20
11/14/18 08:07 AM	Street/Road Construction and Rep Street/Road Intersection Improver Street/Road Lane Construction and Traffic Control Signal Systems	OPW 53159: 60th and Harrison Street Realignment	12/12/20
11/21/18 08:15 AM	Concrete Foundation Construction Electrical Installation/Construction Electrical and Controls Heating, Ventilation, Air Condition Steel Sheet Pile Wall	OPW 53251 - SOIA Clarifier Improvement	12/19/20
10/24/18 08:12 AM	Landfills, Waste Handling Facilities Miscellaneous	OPW 53407: Omaha Solid Waste Collections Contract 2021-2030	01/30/20
	Concrete Foundation Grade, Surface and Bridge		

Project Details: OPW 52470 (CSO): Forest Lawn Creek Inflow Removal and Outfall Storm Sewer (Quest Project #5999056)

View Plan Holders **Download Bid Documents** **Download Addenda** **View Bid Documents**

Print Ad **Project Q & A**

County/City: Douglas - Omaha, NE

Location / Site: Rather large area: 20th Street East; 40th Street West; Reed Street South; State Street North

Directions: City Clerk, 1819 Farnam Street, LC-1 Omaha-Douglas Civic Center, Omaha, NE 68183-0011 by bid opening date and time indicated in a sealed envelope.

Received By: Wednesday, November 14, 2018, at 1:00 PM at the Omaha/Douglas Civic Center, 1819 Farnam Street, 7th Floor, Room 702, Omaha, NE 68183

Project Description: This project is for furnishing labor, materials, equipment, and services for construction of a 15 inch through 96 inch diameter storm sewer; 10 foot by 7 foot reinforced concrete box culvert; 8 inch through 24 inch diameter sanitary sewer including 24 inch and 12 inch tunneling; appurtenant manholes, and cast-in-place junction structures; 96 inch diameter storm sewer to be installed by tunneling; removal and replacement of concrete streets, sidewalks, and driveways; grading; and related other work as included in the project drawings and specifications. This project requires submission of an Economic Equity and Inclusion Plan (EEIP). This project has an SEB reserve for ESB and SB Tier 1 and Tier 2 categories for 5% of the base bid. This project has eight (8) reference materials that can be found in the Q&A section of this advertisement.

Owner: Public Works
ph: (402) 444-5220
contact: Project Engineer
e-mail: pwreception@cityofomaha.org

Soliciting Agent: Douglas County/City of Omaha, NE
902 Civic Center
1819 Farnam Street
Omaha, NE 68183
ph: (402) 444-7155
contact: Eric J. Carlson - Soliciting Agent
e-mail: Carol.Puhr@douglascounty-ne.gov

Project Documents: Copies of the Specifications and/or Plans for use in preparing bids may be obtained by download via www.questcdn.com, QuestCDN Project #5999056. You may download the digital plan

Project Information

CITY OF OMAHA OPW 52470

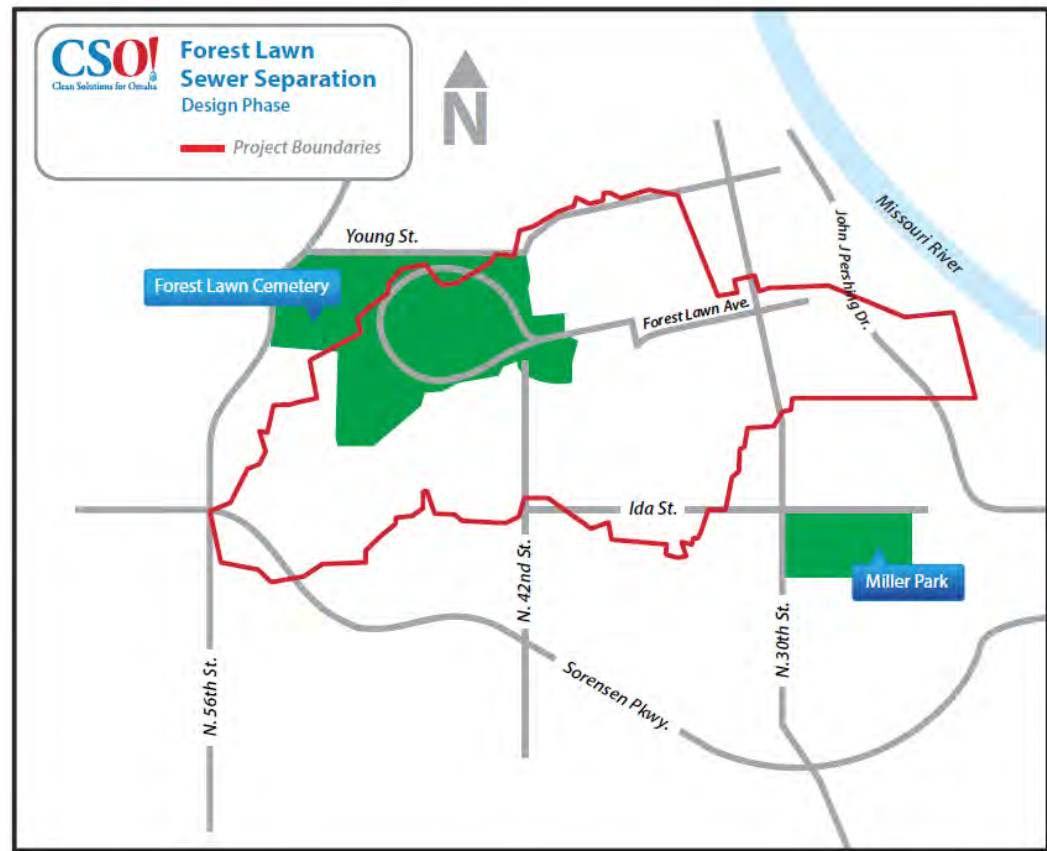
FOREST LAWN SEWER SEPARATION

Project Location

This project is located in the Minne Lusa Basin. The project extends from Pershing Drive to 40th Street and from Read Street to State Street.

Project Description

This project is intended to provide removal of perennial stream flow from the Combined Sewer System. This involves partial sewer separation and a large diameter storm sewer. The removal of the stream will result in decreased flows to the existing combined sewer and reduced flows to the Missouri River Water Resource Recovery Facility.



General Description of Work

Labor, materials, equipment, and services needed for construction of:

- Barricade/Striping
- Clearing/Grubbing
- Demolition/Removals
- Traffic Signal Conduit
- Fencing
- Hauling
- Janitorial
- Paving/Removals
- Rebar
- Seeding/Sodding/Landscaping/
Rolled Erosion Control
- Sidewalks/Ramps
- Signage
- Survey/Monitoring
- SWPPP Items
- Storm Sewer & Sanitary Sewer
- Miscellaneous/Other

Project Overview



**CITY OF OMAHA
PUBLIC WORKS DEPARTMENT
OPW 52470 (CSO)**

Forest Lawn Creek Inflow Removal and Outfall Storm Sewer Project

October 2018

CSO LTCP PROJECT MINNE LUSA
(ML) 105-15: FOREST LAWN



VICINITY MAP

INDEX OF SHEETS	
Sheet No.	Sheet Title
1	COVER SHEET
2	GENERAL NOTES AND LEGEND
3	STAGING KEY MAP
4	STAGING NOTES
5	QUANTITIES
6	SURVEY CONTROL POINTS
7-20	ALIGNMENT DATA
21	REMOVALS KEY MAP
22-20	REMOVALS MAIN LINE
27	REMOVALS MINNE LUSA BLVD. AND WYOMING ST.
28	REMOVALS N. 29TH ST.
29-31	REMOVALS N. 30TH ST.
32	REMOVALS LINDST ST.
33	REMOVALS FOREST LAWN AVE. AND POTTER ST.
34	REMOVALS N. 36TH ST.
35-38	REMOVALS HANOVER ST.
39-40	REMOVALS N. 33RD ST.
41-44	REMOVALS NORTH RIDGE DR.
45-48	REMOVALS YOUNG ST. / REYNOLDS ST. AND KING ST. / N. 34TH ST.
49	REMOVALS SHEFFED ST.
48	REMOVALS GREEN INFRASTRUCTURE
49	STORM PLAN AND PROFILE KEY MAP
50-58	STORM PLAN AND PROFILE MAIN LINE
59	STORM PLAN AND PROFILE MINNE LUSA BLVD.
60-61	STORM PLAN AND PROFILE N. 29TH ST. WEST
62	STORM PLAN AND PROFILE N. 29TH ST. EAST
63-68	STORM PLAN AND PROFILE N. 30TH ST. WEST
69-70	STORM PLAN AND PROFILE N. 30TH ST. EAST
70	STORM PLAN AND PROFILE HANOVER ST.
71	STORM PLAN AND PROFILE FOREST LAWN AVE.
72-75	STORM PLAN AND PROFILE N. 33RD ST.
76-81	STORM PLAN AND PROFILE NORTH RIDGE DR.
82-83	STORM PLAN AND PROFILE YOUNG ST. / N. 36TH ST.
84	STORM PLAN AND PROFILE NORTH RIDGE & N. 34TH ST.
85	STORM PLAN AND PROFILE POTTER ST.
86-88	STORM PLAN AND PROFILE 34TH & KING-SHEFFIELD
	PIPE PROFILES
89	SANITARY PLAN AND PROFILE KEY MAP
90	SANITARY PLAN AND PROFILE FLORENCE BLVD.
97	SANITARY PLAN AND PROFILE WYOMING ST.
98-99	SANITARY PLAN AND PROFILE N. 29TH ST.
100	SANITARY PLAN AND PROFILE N. 30TH ST.
101-108	SANITARY PLAN AND PROFILE HANOVER ST.
109-110	SANITARY PLAN AND PROFILE WEBER ST.
111	SANITARY PLAN AND PROFILE N. 33RD ST.
112	SANITARY PLAN AND PROFILE NORTH RIDGE DR. SOUTH
113-114	SANITARY PLAN AND PROFILE NORTH RIDGE DR.
115	SANITARY PLAN AND PROFILE SHEFFED ST.
116-117	SANITARY PLAN AND PROFILE N. 34TH ST./KING ST.
118	SANITARY PLAN AND PROFILE REYNOLDS ST.
119	RESTORATION KEY MAP
120-127	RESTORATION MAIN LINE
128	RESTORATION N. 29TH ST.
129-132	RESTORATION HANOVER ST.
133	RESTORATION HANOVER ST.
134	RESTORATION FOREST LAWN AVE.
135-136	RESTORATION N. 33RD ST.
137-142	RESTORATION NORTH RIDGE DR.
143	RESTORATION N. KING & N. 34TH ST.
144	RESTORATION SHEFFED ST.
145-147	RESTORATION N. 36TH ST.
148-150	GREEN INFRASTRUCTURE
151-158	PLANTING SHEETS
159	GIS SEWER MODIFICATIONS SCHEMATIC
160-170	STRUCTURAL SHEETS
171-175	DETAIL SHEETS
176-182	ROW SHEETS
183-182	SNIPPET SHEETS
183-206	BORING LOGS

OPW 52470

DESIGNED BY: RICHARD E. BESANCON DATE 9/26/2018 DRAWN BY: R. ROLF
 DESIGN ENGINEER [Signature] DATE 12/3/2018 SURVEYED BY: RW ENGINEERING
 CITY ENGINEER [Signature] DATE 12/3/2018 FIELD BOOK NO. -

M.U.D. SENT:	O.P.P.D. SENT:	TELE. SENT:	CABLE SENT:
RECEIVED:	RECEIVED:	RECEIVED:	RECEIVED:
1/4 SECTION	SCALE:	VARIES	SHEET 1 OF 205



**BURNS
McDONNELL**
1111 N. 13th Street
SUITE 300
OMAHA, NE 68102

Construction Quantities

(see handout)

QUANTITIES

Line Item	Standard	Item Description	Quantity	Unit
1	0000.00	MODIFICATION, PROMOTIONS, BONDS AND INSURANCE	1	EA
2	0000.00	STORMWATER POLLUTION PREVENTION PLAN (SWPPP) MAINTENANCE ALLOWANCE	1	EA
3	0000.00	ENVIRONMENTAL ALLOWANCE	1	EA
4	0000.00	PERMITS AND ASSOCIATED FEES	1	EA
5	0000.00	DECAVATE AND EXISTING UNDERCUTS	30	EA
6	0000.00	EXCESS PAVING	1	EA
7	0000.00	BARRELS - TYPE B	1,027	EA
8	0000.00	BARRELS - TYPE C	1,027	EA
9	0000.00	SWPPP MODIFICATION SIGN	4	EA
10	0000.00	CONSTRUCT IDENTIFICATION SIGN	4	EA
11	0000.00	RENTAL OF CRANE, FULLY OPERATED	40	HR
12	0000.00	RENTAL OF ROLL-ON/FLY OPERATED	40	HR
13	0000.00	RENTAL OF CRANE TRUCK, FULLY OPERATED	40	HR
14	0000.00	RENTAL OF CRANE, BACKHOE, FULLY OPERATED	40	HR
15	0000.00	RENTAL OF CRANE, BACKHOE, FULLY OPERATED	40	HR
16	0000.00	INSTALL SUT REND	870	EA
17	0000.00	INSTALL AREA INLET PROTECTION	2	EA
18	0000.00	INSTALL CURB INLET PROTECTION	196	EA
19	0000.00	INSTALL CURB INLET PROTECTION	6	EA
20	0000.00	INSTALL CONSTRUCTION FENCE	3	EA
21	0000.00	CLEARING AND GRUBBING - GENERAL	1	EA
22	0000.00	CLEARING AND GRUBBING THREE OVER 12" TO 18" DIAMETER	29	EA
23	0000.00	CLEARING AND GRUBBING THREE OVER 18" TO 24" DIAMETER	80	EA
24	0000.00	CLEARING AND GRUBBING THREE OVER 24" TO 36" DIAMETER	4	EA
25	0000.00	CLEARING AND GRUBBING THREE OVER 36" TO 48" DIAMETER	1	EA
26	0000.00	RENTAL OF CRANE, BACKHOE, FULLY OPERATED	40	HR
27	0000.00	RENTAL OF CRANE, BACKHOE, FULLY OPERATED	40	HR
28	0000.00	RENTAL OF CRANE, BACKHOE, FULLY OPERATED	40	HR
29	0000.00	RENTAL OF CRANE, BACKHOE, FULLY OPERATED	40	HR
30	0000.00	RENTAL OF CRANE, BACKHOE, FULLY OPERATED	40	HR
31	0000.00	RENTAL OF CRANE, BACKHOE, FULLY OPERATED	40	HR
32	0000.00	RENTAL OF CRANE, BACKHOE, FULLY OPERATED	40	HR
33	0000.00	RENTAL OF CRANE, BACKHOE, FULLY OPERATED	40	HR
34	0000.00	RENTAL OF CRANE, BACKHOE, FULLY OPERATED	40	HR
35	0000.00	RENTAL OF CRANE, BACKHOE, FULLY OPERATED	40	HR
36	0000.00	RENTAL OF CRANE, BACKHOE, FULLY OPERATED	40	HR
37	0000.00	RENTAL OF CRANE, BACKHOE, FULLY OPERATED	40	HR
38	0000.00	RENTAL OF CRANE, BACKHOE, FULLY OPERATED	40	HR
39	0000.00	RENTAL OF CRANE, BACKHOE, FULLY OPERATED	40	HR
40	0000.00	RENTAL OF CRANE, BACKHOE, FULLY OPERATED	40	HR
41	0000.00	RENTAL OF CRANE, BACKHOE, FULLY OPERATED	40	HR
42	0000.00	RENTAL OF CRANE, BACKHOE, FULLY OPERATED	40	HR
43	0000.00	RENTAL OF CRANE, BACKHOE, FULLY OPERATED	40	HR
44	0000.00	RENTAL OF CRANE, BACKHOE, FULLY OPERATED	40	HR
45	0000.00	RENTAL OF CRANE, BACKHOE, FULLY OPERATED	40	HR
46	0000.00	RENTAL OF CRANE, BACKHOE, FULLY OPERATED	40	HR
47	0000.00	RENTAL OF CRANE, BACKHOE, FULLY OPERATED	40	HR
48	0000.00	RENTAL OF CRANE, BACKHOE, FULLY OPERATED	40	HR
49	0000.00	RENTAL OF CRANE, BACKHOE, FULLY OPERATED	40	HR
50	0000.00	RENTAL OF CRANE, BACKHOE, FULLY OPERATED	40	HR
51	0000.00	RENTAL OF CRANE, BACKHOE, FULLY OPERATED	40	HR
52	0000.00	RENTAL OF CRANE, BACKHOE, FULLY OPERATED	40	HR
53	0000.00	RENTAL OF CRANE, BACKHOE, FULLY OPERATED	40	HR
54	0000.00	RENTAL OF CRANE, BACKHOE, FULLY OPERATED	40	HR
55	0000.00	RENTAL OF CRANE, BACKHOE, FULLY OPERATED	40	HR
56	0000.00	RENTAL OF CRANE, BACKHOE, FULLY OPERATED	40	HR
57	0000.00	RENTAL OF CRANE, BACKHOE, FULLY OPERATED	40	HR
58	0000.00	RENTAL OF CRANE, BACKHOE, FULLY OPERATED	40	HR
59	0000.00	RENTAL OF CRANE, BACKHOE, FULLY OPERATED	40	HR
60	0000.00	RENTAL OF CRANE, BACKHOE, FULLY OPERATED	40	HR
61	0000.00	RENTAL OF CRANE, BACKHOE, FULLY OPERATED	40	HR
62	0000.00	RENTAL OF CRANE, BACKHOE, FULLY OPERATED	40	HR
63	0000.00	RENTAL OF CRANE, BACKHOE, FULLY OPERATED	40	HR
64	0000.00	RENTAL OF CRANE, BACKHOE, FULLY OPERATED	40	HR
65	0000.00	RENTAL OF CRANE, BACKHOE, FULLY OPERATED	40	HR
66	0000.00	RENTAL OF CRANE, BACKHOE, FULLY OPERATED	40	HR
67	0000.00	RENTAL OF CRANE, BACKHOE, FULLY OPERATED	40	HR
68	0000.00	RENTAL OF CRANE, BACKHOE, FULLY OPERATED	40	HR
69	0000.00	RENTAL OF CRANE, BACKHOE, FULLY OPERATED	40	HR
70	0000.00	RENTAL OF CRANE, BACKHOE, FULLY OPERATED	40	HR
71	0000.00	RENTAL OF CRANE, BACKHOE, FULLY OPERATED	40	HR
72	0000.00	RENTAL OF CRANE, BACKHOE, FULLY OPERATED	40	HR
73	0000.00	RENTAL OF CRANE, BACKHOE, FULLY OPERATED	40	HR
74	0000.00	RENTAL OF CRANE, BACKHOE, FULLY OPERATED	40	HR
75	0000.00	RENTAL OF CRANE, BACKHOE, FULLY OPERATED	40	HR
76	0000.00	RENTAL OF CRANE, BACKHOE, FULLY OPERATED	40	HR
77	0000.00	RENTAL OF CRANE, BACKHOE, FULLY OPERATED	40	HR
78	0000.00	RENTAL OF CRANE, BACKHOE, FULLY OPERATED	40	HR
79	0000.00	RENTAL OF CRANE, BACKHOE, FULLY OPERATED	40	HR
80	0000.00	RENTAL OF CRANE, BACKHOE, FULLY OPERATED	40	HR
81	0000.00	RENTAL OF CRANE, BACKHOE, FULLY OPERATED	40	HR
82	0000.00	RENTAL OF CRANE, BACKHOE, FULLY OPERATED	40	HR
83	0000.00	RENTAL OF CRANE, BACKHOE, FULLY OPERATED	40	HR
84	0000.00	RENTAL OF CRANE, BACKHOE, FULLY OPERATED	40	HR
85	0000.00	RENTAL OF CRANE, BACKHOE, FULLY OPERATED	40	HR
86	0000.00	RENTAL OF CRANE, BACKHOE, FULLY OPERATED	40	HR
87	0000.00	RENTAL OF CRANE, BACKHOE, FULLY OPERATED	40	HR
88	0000.00	RENTAL OF CRANE, BACKHOE, FULLY OPERATED	40	HR
89	0000.00	RENTAL OF CRANE, BACKHOE, FULLY OPERATED	40	HR
90	0000.00	RENTAL OF CRANE, BACKHOE, FULLY OPERATED	40	HR
91	0000.00	RENTAL OF CRANE, BACKHOE, FULLY OPERATED	40	HR
92	0000.00	RENTAL OF CRANE, BACKHOE, FULLY OPERATED	40	HR
93	0000.00	RENTAL OF CRANE, BACKHOE, FULLY OPERATED	40	HR
94	0000.00	RENTAL OF CRANE, BACKHOE, FULLY OPERATED	40	HR
95	0000.00	RENTAL OF CRANE, BACKHOE, FULLY OPERATED	40	HR
96	0000.00	RENTAL OF CRANE, BACKHOE, FULLY OPERATED	40	HR
97	0000.00	RENTAL OF CRANE, BACKHOE, FULLY OPERATED	40	HR
98	0000.00	RENTAL OF CRANE, BACKHOE, FULLY OPERATED	40	HR
99	0000.00	RENTAL OF CRANE, BACKHOE, FULLY OPERATED	40	HR
100	0000.00	RENTAL OF CRANE, BACKHOE, FULLY OPERATED	40	HR

93	760.07	CONSTRUCT AGGREGATE BEDDING FOR 10" STORM SEWER PIPE	753	LF
94	760.08	CONSTRUCT AGGREGATE BEDDING FOR 10" STORM SEWER PIPE	2,096	LF
95	760.09	CONSTRUCT AGGREGATE BEDDING FOR 10" STORM SEWER PIPE	420	LF
96	760.10	CONSTRUCT AGGREGATE BEDDING FOR 10" STORM SEWER PIPE	760	LF
97	760.11	CONSTRUCT AGGREGATE BEDDING FOR 10" STORM SEWER PIPE	8	LF
98	760.12	CONSTRUCT AGGREGATE BEDDING FOR 10" STORM SEWER PIPE	2,096	LF
99	760.13	CONSTRUCT AGGREGATE BEDDING FOR 10" STORM SEWER PIPE	251	LF
100	760.14	CONSTRUCT TRENCH EXCAVATION (UNSTABLE MATERIAL)	20,400	CY
101	760.15	CONSTRUCT 12" RCP CLASS III	40	LF
102	760.16	CONSTRUCT 12" RCP CLASS III	1,347	LF
103	760.17	CONSTRUCT 12" RCP CLASS III	1,413	LF
104	760.18	CONSTRUCT 12" RCP CLASS III	2,514	LF
105	760.19	CONSTRUCT 12" RCP CLASS III	1,347	LF
106	760.20	CONSTRUCT 12" RCP CLASS III	251	LF
107	-	DO NOT USE	-	-
108	760.21	CONSTRUCT 12" RCP CLASS III	251	LF
109	760.22	CONSTRUCT 12" RCP CLASS III	251	LF
110	760.23	CONSTRUCT 12" RCP CLASS III	251	LF
111	760.24	CONSTRUCT 12" RCP CLASS III	251	LF
112	-	DO NOT USE	-	-
113	760.25	CONSTRUCT 12" RCP CLASS III	40	LF
114	760.26	CONSTRUCT 12" RCP CLASS III	251	LF
115	760.27	CONSTRUCT 12" RCP CLASS III	251	LF
116	760.28	CONSTRUCT 12" RCP CLASS III	251	LF
117	760.29	CONSTRUCT 12" RCP CLASS III	251	LF
118	760.30	CONSTRUCT 12" RCP CLASS III	251	LF
119	760.31	CONSTRUCT 12" RCP CLASS III	251	LF
120	760.32	CONSTRUCT 12" RCP CLASS III	251	LF
121	760.33	CONSTRUCT 12" RCP CLASS III	251	LF
122	760.34	CONSTRUCT 12" RCP CLASS III	251	LF
123	760.35	CONSTRUCT 12" RCP CLASS III	251	LF
124	760.36	CONSTRUCT 12" RCP CLASS III	251	LF
125	760.37	CONSTRUCT 12" RCP CLASS III	251	LF
126	760.38	CONSTRUCT 12" RCP CLASS III	251	LF
127	760.39	CONSTRUCT 12" RCP CLASS III	251	LF
128	760.40	CONSTRUCT 12" RCP CLASS III	251	LF
129	760.41	CONSTRUCT 12" RCP CLASS III	251	LF
130	760.42	CONSTRUCT 12" RCP CLASS III	251	LF
131	760.43	CONSTRUCT 12" RCP CLASS III	251	LF
132	760.44	CONSTRUCT 12" RCP CLASS III	251	LF
133	760.45	CONSTRUCT 12" RCP CLASS III	251	LF
134	760.46	CONSTRUCT 12" RCP CLASS III	251	LF
135	760.47	CONSTRUCT 12" RCP CLASS III	251	LF
136	760.48	CONSTRUCT 12" RCP CLASS III	251	LF
137	760.49	CONSTRUCT 12" RCP CLASS III	251	LF
138	760.50	CONSTRUCT 12" RCP CLASS III	251	LF
139	760.51	CONSTRUCT 12" RCP CLASS III	251	LF
140	760.52	CONSTRUCT 12" RCP CLASS III	251	LF
141	760.53	CONSTRUCT 12" RCP CLASS III	251	LF
142	760.54	CONSTRUCT 12" RCP CLASS III	251	LF
143	760.55	CONSTRUCT 12" RCP CLASS III	251	LF
144	760.56	CONSTRUCT 12" RCP CLASS III	251	LF
145	760.57	CONSTRUCT 12" RCP CLASS III	251	LF
146	760.58	CONSTRUCT 12" RCP CLASS III	251	LF
147	760.59	CONSTRUCT 12" RCP CLASS III	251	LF
148	760.60	CONSTRUCT 12" RCP CLASS III	251	LF
149	760.61	CONSTRUCT 12" RCP CLASS III	251	LF
150	760.62	CONSTRUCT 12" RCP CLASS III	251	LF
151	760.63	CONSTRUCT 12" RCP CLASS III	251	LF
152	760.64	CONSTRUCT 12" RCP CLASS III	251	LF
153	760.65	CONSTRUCT 12" RCP CLASS III	251	LF
154	760.66	CONSTRUCT 12" RCP CLASS III	251	LF
155	760.67	CONSTRUCT 12" RCP CLASS III	251	LF
156	760.68	CONSTRUCT 12" RCP CLASS III	251	LF
157	760.69	CONSTRUCT 12" RCP CLASS III	251	LF
158	760.70	CONSTRUCT 12" RCP CLASS III	251	LF
159	760.71	CONSTRUCT 12" RCP CLASS III	251	LF
160	760.72	CONSTRUCT 12" RCP CLASS III	251	LF
161	760.73	CONSTRUCT 12" RCP CLASS III	251	LF
162	760.74	CONSTRUCT 12" RCP CLASS III	251	LF
163	760.75	CONSTRUCT 12" RCP CLASS III	251	LF
164	760.76	CONSTRUCT 12" RCP CLASS III	251	LF
165	760.77	CONSTRUCT 12" RCP CLASS III	251	LF
166	760.78	CONSTRUCT 12" RCP CLASS III	251	LF
167	760.79	CONSTRUCT 12" RCP CLASS III	251	LF
168	760.80	CONSTRUCT 12" RCP CLASS III	251	LF
169	760.81	CONSTRUCT 12" RCP CLASS III	251	LF
170	760.82	CONSTRUCT 12" RCP CLASS III	251	LF
171	760.83	CONSTRUCT 12" RCP CLASS III	251	LF
172	760.84	CONSTRUCT 12" RCP CLASS III	251	LF
173	760.85	CONSTRUCT 12" RCP CLASS III	251	LF
174	760.86	CONSTRUCT 12" RCP CLASS III	251	LF
175	760.87	CONSTRUCT 12" RCP CLASS III	251	LF
176	760.88	CONSTRUCT 12" RCP CLASS III	251	LF
177	760.89	CONSTRUCT 12" RCP CLASS III	251	LF
178	760.90	CONSTRUCT 12" RCP CLASS III	251	LF
179	760.91	CONSTRUCT 12" RCP CLASS III	251	LF
180	760.92	CONSTRUCT 12" RCP CLASS III	251	LF
181	760.93	CONSTRUCT 12" RCP CLASS III	251	LF
182	760.94	CONSTRUCT 12" RCP CLASS III	251	LF
183	760.95	CONSTRUCT 12" RCP CLASS III	251	LF
184	760.96	CONSTRUCT 12" RCP CLASS III	251	LF
185	760.97	CONSTRUCT 12" RCP CLASS III	251	LF
186	760.98	CONSTRUCT 12" RCP CLASS III	251	LF
187	760.99	CONSTRUCT 12" RCP CLASS III	251	LF
188	761.00	CONSTRUCT 12" RCP CLASS III	251	LF
189	761.01	CONSTRUCT 12" RCP CLASS III	251	LF
190	761.02	CONSTRUCT 12" RCP CLASS III	251	LF
191	761.03	CONSTRUCT 12" RCP CLASS III	251	LF
192	761.04	CONSTRUCT 12" RCP CLASS III	251	LF
193	761.05	CONSTRUCT 12" RCP CLASS III	251	LF
194	761.06	CONSTRUCT 12" RCP CLASS III	251	LF
195	761.07	CONSTRUCT 12" RCP CLASS III	251	LF
196	761.08	CONSTRUCT 12" RCP CLASS III	251	LF
197	761.09	CONSTRUCT 12" RCP CLASS III	251	LF
198	761.10	CONSTRUCT 12" RCP CLASS III	251	LF
199	761.11	CONSTRUCT 12" RCP CLASS III	251	LF
200	761.12	CONSTRUCT 12" RCP CLASS III	251	LF

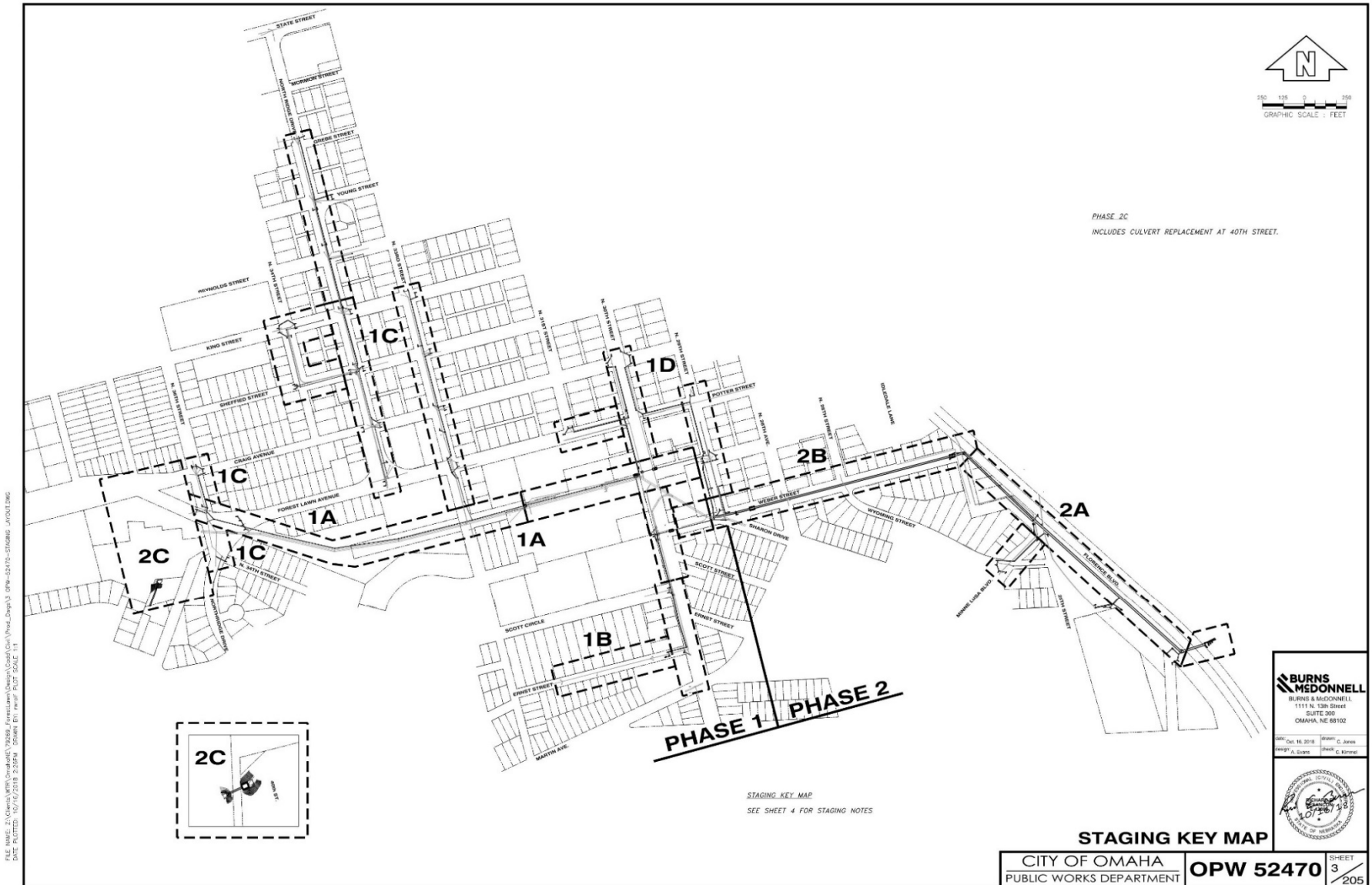
197	100.00	REMOVE AND REINSTALL MANHOLE POST	24	EA
198	100.01	REMOVE EXISTING 18" RCP CLASS III	1	EA
199	100.02	REMOVE AND REINSTALL 18" RCP CLASS III	80	EA
200	100.03	REMOVE EXISTING 18" RCP CLASS III	2	EA
201	100.04	REMOVE EXISTING 18" RCP CLASS III	1	EA
202	100.05	REMOVE EXISTING 18" RCP CLASS III	1	EA
203	100.06	REMOVE EXISTING 18" RCP CLASS III	2	EA
204	100.07	REMOVE EXISTING 18" RCP CLASS III	13	EA
205	100.08	REMOVE EXISTING 18" RCP CLASS III	17	EA
206	100.09	REMOVE EXISTING 18" RCP CLASS III	1	EA
207	100.10	REMOVE EXISTING 18" RCP CLASS III	39	EA

Construction Quantities

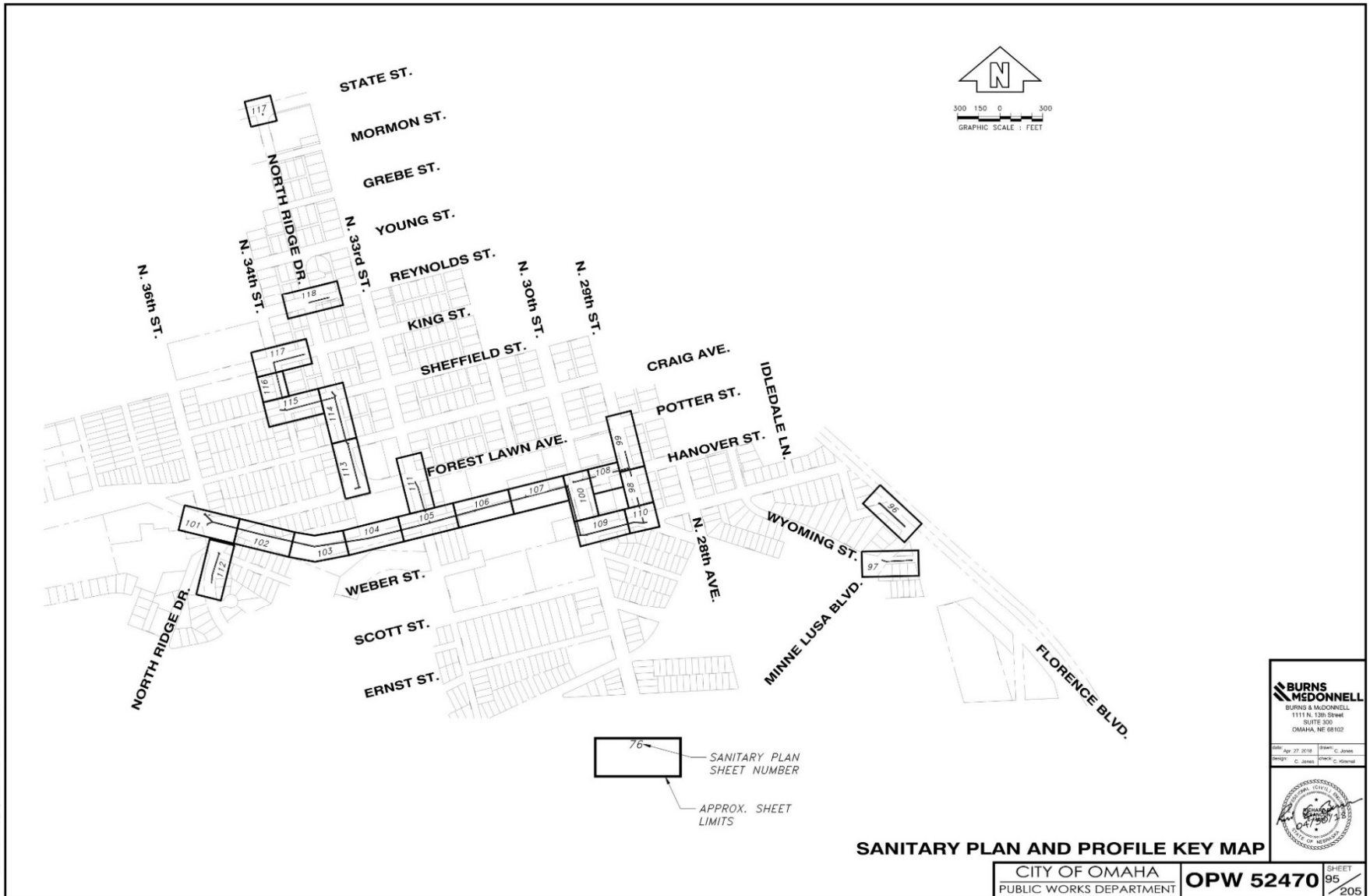
(see handout)

Barricade/Striping	o	Type II and III Barricades (2,000 days)	
Clearing/Grubbing	o	General Clearing and Grubbing	
	o	Remove Trees (79 EA)	
Demo/Removals	o	Pipe (7,100 LF)	o Fencing (332 LF)
	o	Remove or Abandon Manhole (25 EA)	o Inlets (134 EA)
	o	Retaining Wall (408 SF)	
Electrical	o	None	
Fencing	o	None	
Hauling	o	10,700 CY	
Janitorial	o	Job Trailer	
Paving/Removals	o	Paving Removal (34,332 SY)	o Construct Curb & Gutter (371 LF)
	o	Driveway Removal (5,689 SY)	o Construct Driveway (2,304 SY)
	o	Saw Cut (11,159 LF)	o Remove and Replace Bollards (10 EA)
	o	Curb and Gutter Removal (353 LF)	o Construct Pipe Plugs (96 EA)
	o	Construct Paving (36,010 SY)	
Painting	o	None	
Seeding/Sodding/Landscaping/Bioswale/Green Infrastructure/Rolled Erosion Control	o	Tree Trimming	o Install Sodding (6,600 SY)
	o	Place Topsoil (2,694 SY)	o Rip Rap (193 Ton)
	o	Install Seeding (0.7 AC)	o Straw Wattle (230 LF)
Sidewalks/Ramps	o	Remove sidewalk (36,116 SF)	o Sidewalk (48,101 SF)
Signage	o	Project Signs (4 EA)	
Site Security	o	None	
Survey/Monitoring	o	None	
SWPPP Items	o	Silt Fence (2,014 LF)	o Construct Inlets (128 EA)
	o	Inlet Protection (209 EA)	o Construct Junction Boxes (5 EA)
	o	SWPPP Notification Sign (4 EA)	o Rebar
Water & Sewer Pipelines	o	Pipe 12" to 96" (21,276 LF)	o Manholes (1,000 VF)
	o	Tunneling and Microtunneling (2,060 LF)	o Box Culvert (1,328 LF)
Miscellaneous	o	Bypass Pumping	o Outfall Structure Modifications (1 LS)
	o	Equipment Rental	o Flap Gate Installation
	o	Trench Excavation (30,000 CY)	o CCTV Inspection (19,276 LF)

Construction Staging

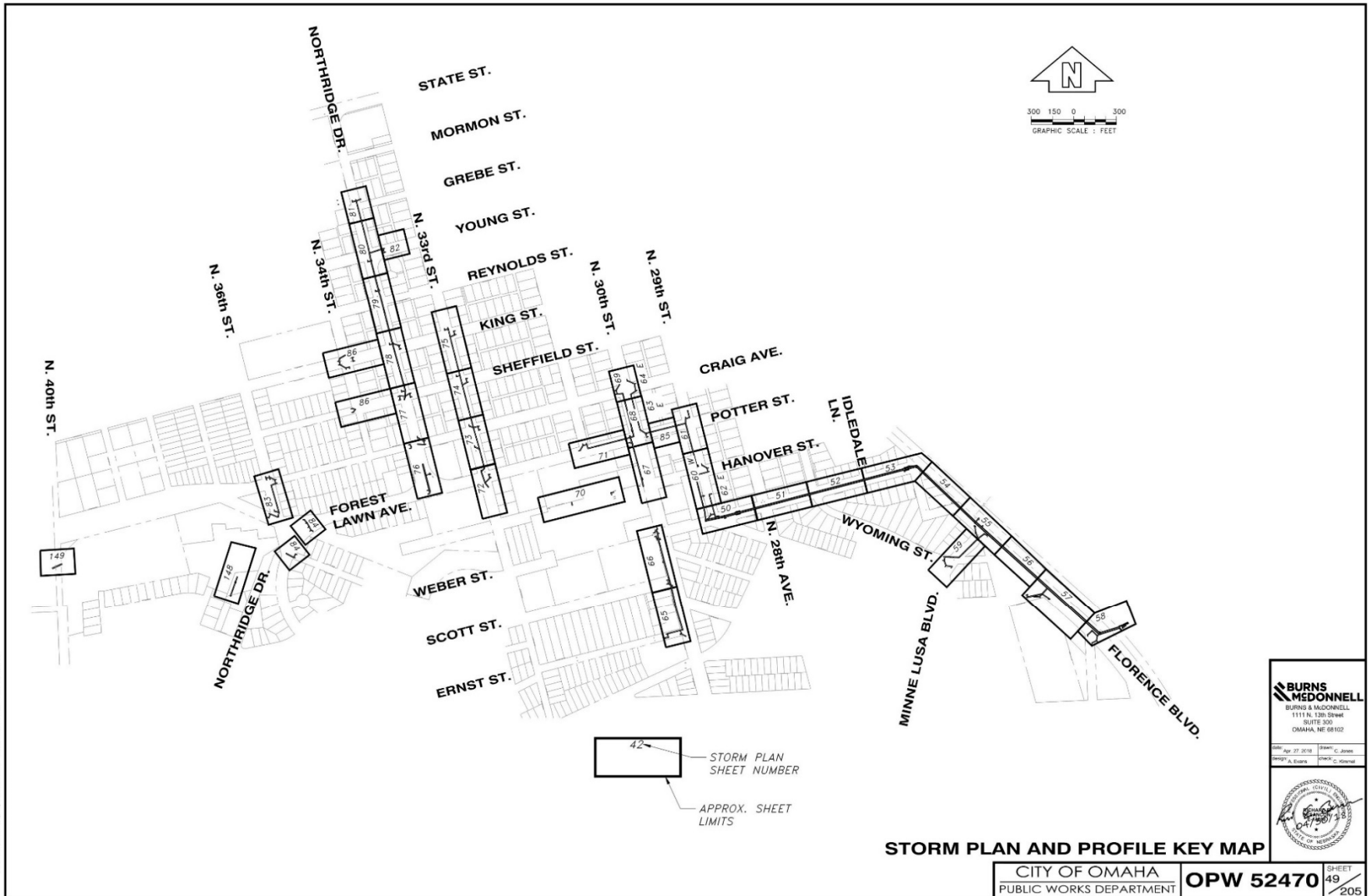


Sanitary Sewer



FILE NAME: Z:\Users\BURNS\OneDrive\Projects\52470\Sanitary\Drawings\52470-19-SHEET LAYOUT SANITARY.dwg
DATE: 1/23/2018 4:47:23 PM
PLOTTER: HP DesignJet T1100
PLOT SCALE: 1"=100'

Storm Sewer



Construction Activities

ACTIVITY	ANTICIPATED TIME FRAME
Bid Advertisement	October 31, 2018
Pre-Bid Meeting	November 14, 2018
Bid Opening	December 19, 2018
Anticipated Construction Notice to Proceed	June 2019
Construction Substantial Completion	670 Days (April 2021)
Construction Final Completion	731 Days (June 2021)

Questions



Contacts

The background of the slide is a solid light blue color. In the lower portion, there are several overlapping, wavy lines in various shades of blue, ranging from light to dark. These lines create a sense of movement and depth, resembling stylized waves or flowing ribbons. The lines are more concentrated on the right side and fade out towards the left.

Contact Information

CHAMBER OF COMMERCE

Winsley Durand

REACH Executive Director
wdurand@omahachamber.org
402-233-7143

CITY OF OMAHA

Christian Espinosa

Program Administrator,
Human Rights & Relations
Economic Equity and Inclusion
Program
christian.espinosa@cityofomaha.org
402-444-5052

Heather Tippey Pierce

General Services Manager,
Omaha Public Works Department
htpierce@cityofomaha.org
402-444-5220

Adam Wilmes

City Project Manager
Omaha Public Works Department
adam.wilmes@cityofomaha.org
402-444-3819

PROJECT MANAGEMENT/ ECONOMIC EQUITY AND INCLUSION TEAM

Cameron Gales

CSO Economic Inclusion Officer
cameron.gales@jacobs.com
402-320-9591

Tom Heinemann

CSO Program Manager
tom.heinemann@jacobs.com
402-609-7513

Pat Nelson

CSO Environmental Manager
pat.nelson@jacobs.com
402-444-5456

Roger Coffey

CSO Sewer Separation Manager
roger.coffey@hdrinc.com
402-926-7182

Rick Besancon

Design Project Manager
rbesancon@burnsmcd.com
402-502-8087

Leanne Zietlow

CSO Subcontracting Lead
leanne.zietlow@hdrinc.com
402-926-7186

Stephanie Rittershaus

CSO Strategic Communications
stephanie.rittershaus@hdrinc.com
402-548-5017

Linda Lovgren

CSO Public Program Facilitator
lovgren@emspacegroup.com
531-222-8315