

# Program Overview

February 2023



# CSO Program Goals

The Omaha CSO Program is responsible for improving water quality in area rivers and streams by reducing combined sewage overflows. The CSO Program has three primary goals:

**Regulatory Compliance**

**Economic Affordability**

**Community Acceptance**



# Goal 1: Regulatory Compliance

## Regulatory Compliance

- Implement projects according to state and federal regulations
- Reduce pollutant impacts from the CSOs on the Missouri River and Papillion Creek



# Goal 2: Economic Affordability

## Economic Affordability

- Minimize the financial burden to ratepayers/customers





# Community Acceptance

- Facilitate open dialogue with the public
- Provide timely program and project information
- Implement an economic inclusion plan



# Opportunities & Benefits

- Reduce overflows of raw sewage to our streams; improve water quality
- Continue to eliminate sewer backups into basements
- Replace aging sewer, gas, water and street infrastructure
- Improve drainage and flooding
- Creating community amenities while implementing sound infrastructure solutions



# Additional Opportunities & Benefits

## UPDATED INFRASTRUCTURE:

- More than 56,000 feet of newly constructed or rehabilitated sewer pipe
- ADA Compliant Curb Replacements



# Long Term Control Plan (LTCP)

- Approved in 2010;  
Updates approved in 2015 & 2021
- Five major elements:
  - MRWRRF Improvements
  - Targeted Sewer Separation
  - Underground Storage Tanks
  - High Rate Treatment Facilities
- LTCP includes Green Infrastructure enhancements



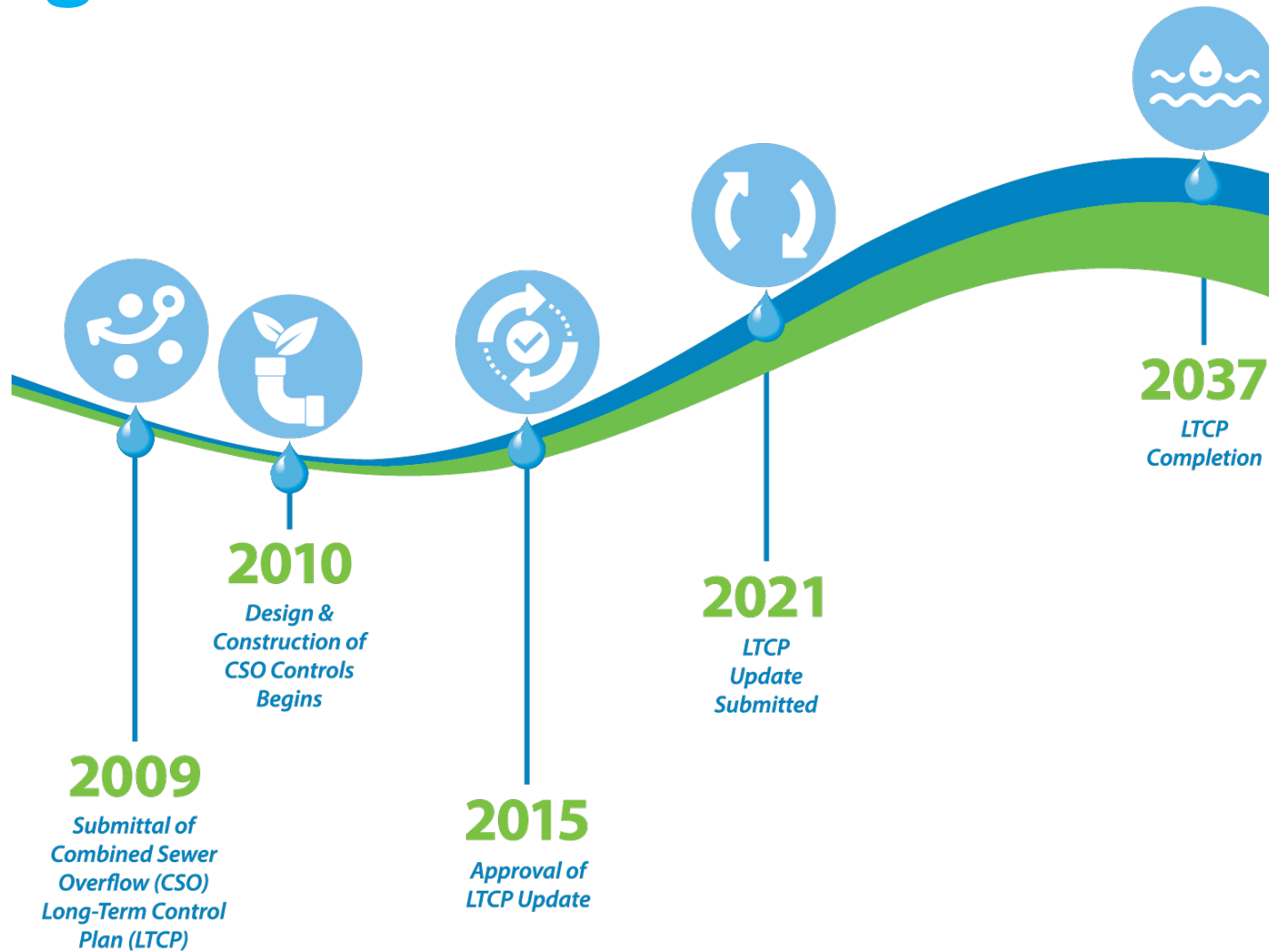


# Targeted Sewer Separation





# Program Timeline

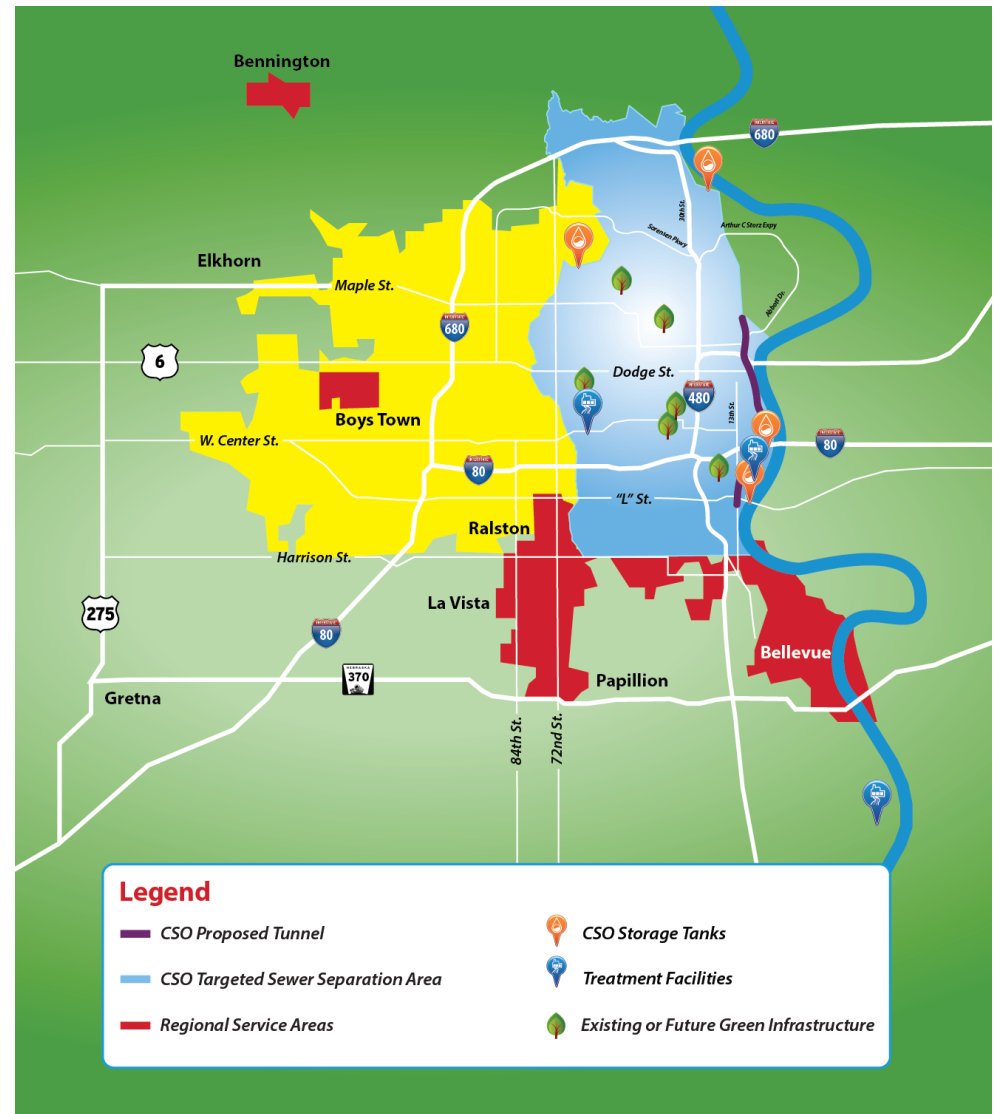




# Omaha's Sewer System

# Regional Service Area

- Two regional treatment facility
- 10 wholesale users
- 275 sq. mile drainage area
- 600,000 service population



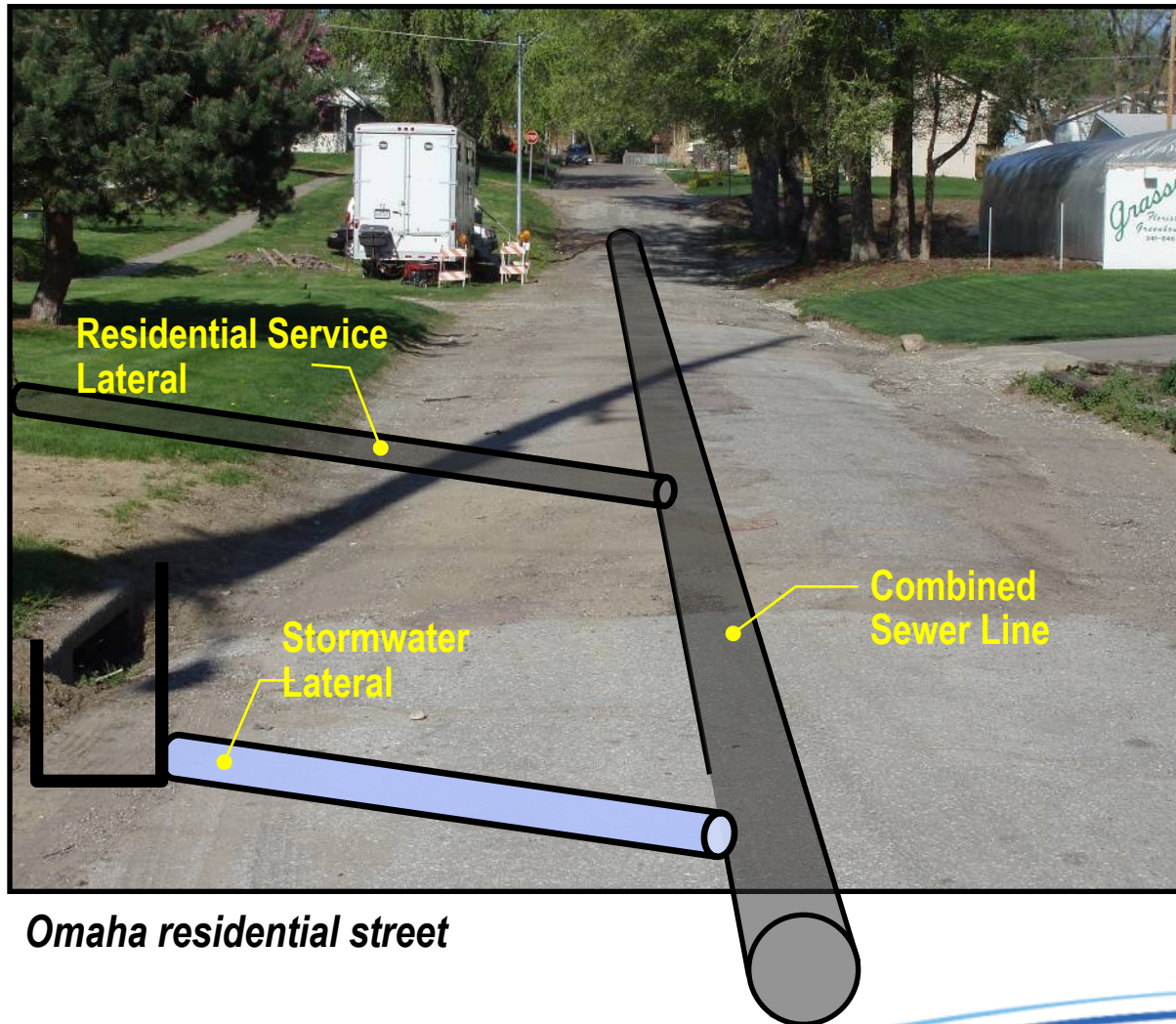


# Omaha Sewer System

- 1,950 miles of sewers
- 43 sq. miles combined sewer area
  - 6,200 sq. blocks
- CSO outfalls
  - 9 to Papillion Creek
  - 17 to Missouri River
  - 4 deactivated

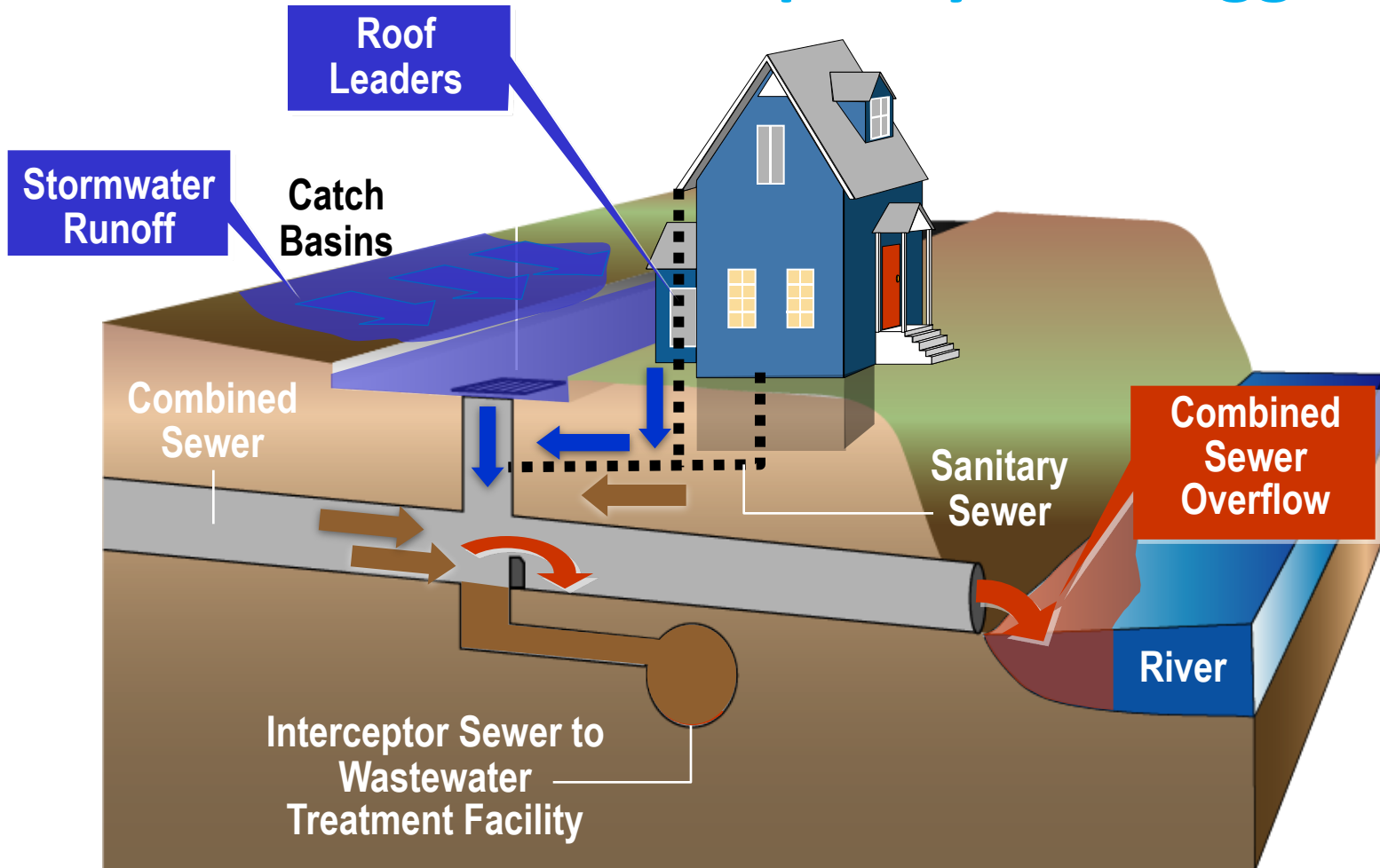


# Typical Combined System

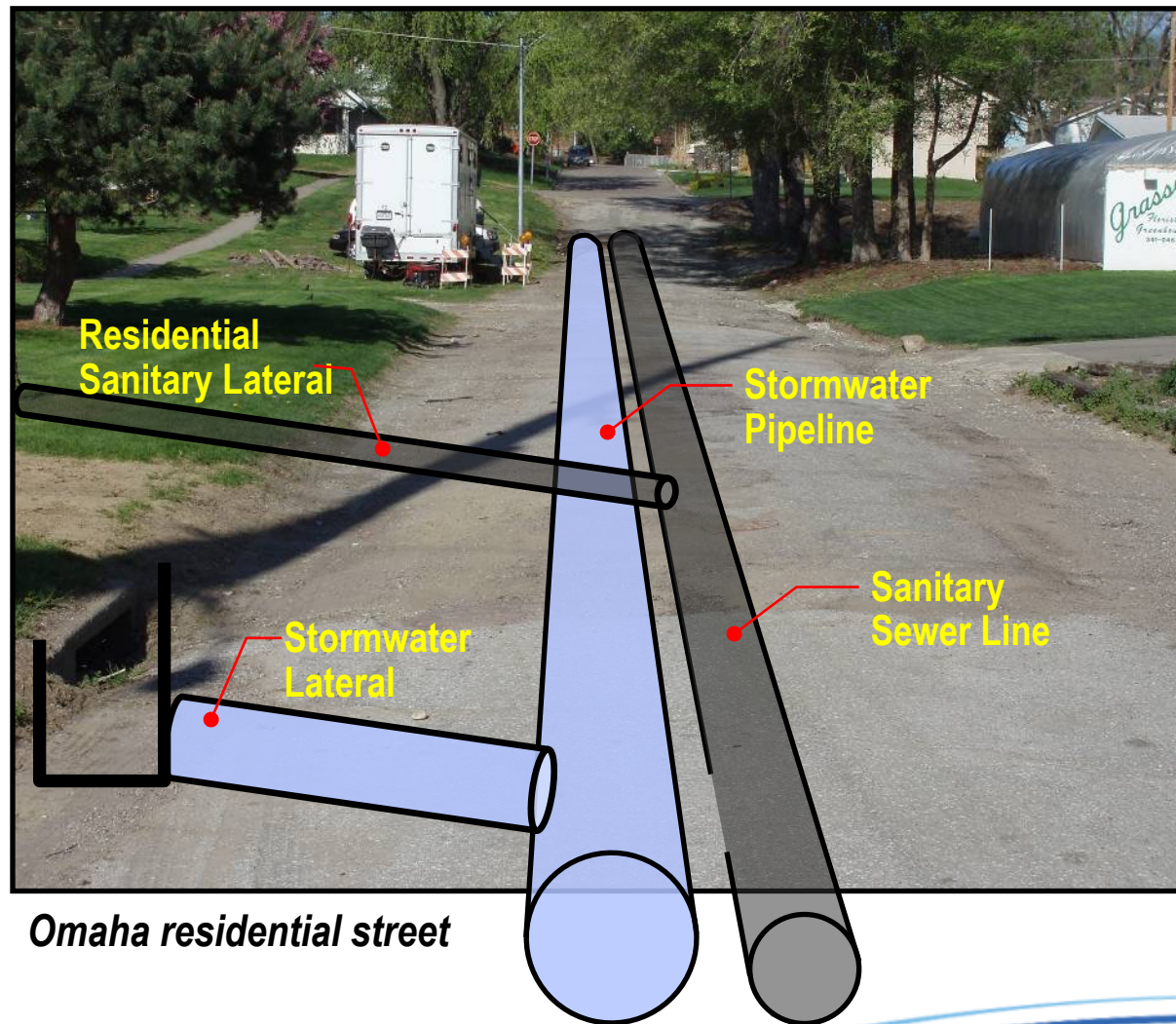




# Wet weather inflows exceed the CSS capacity and trigger a CSO



# Typical Separated System



*Omaha residential street*

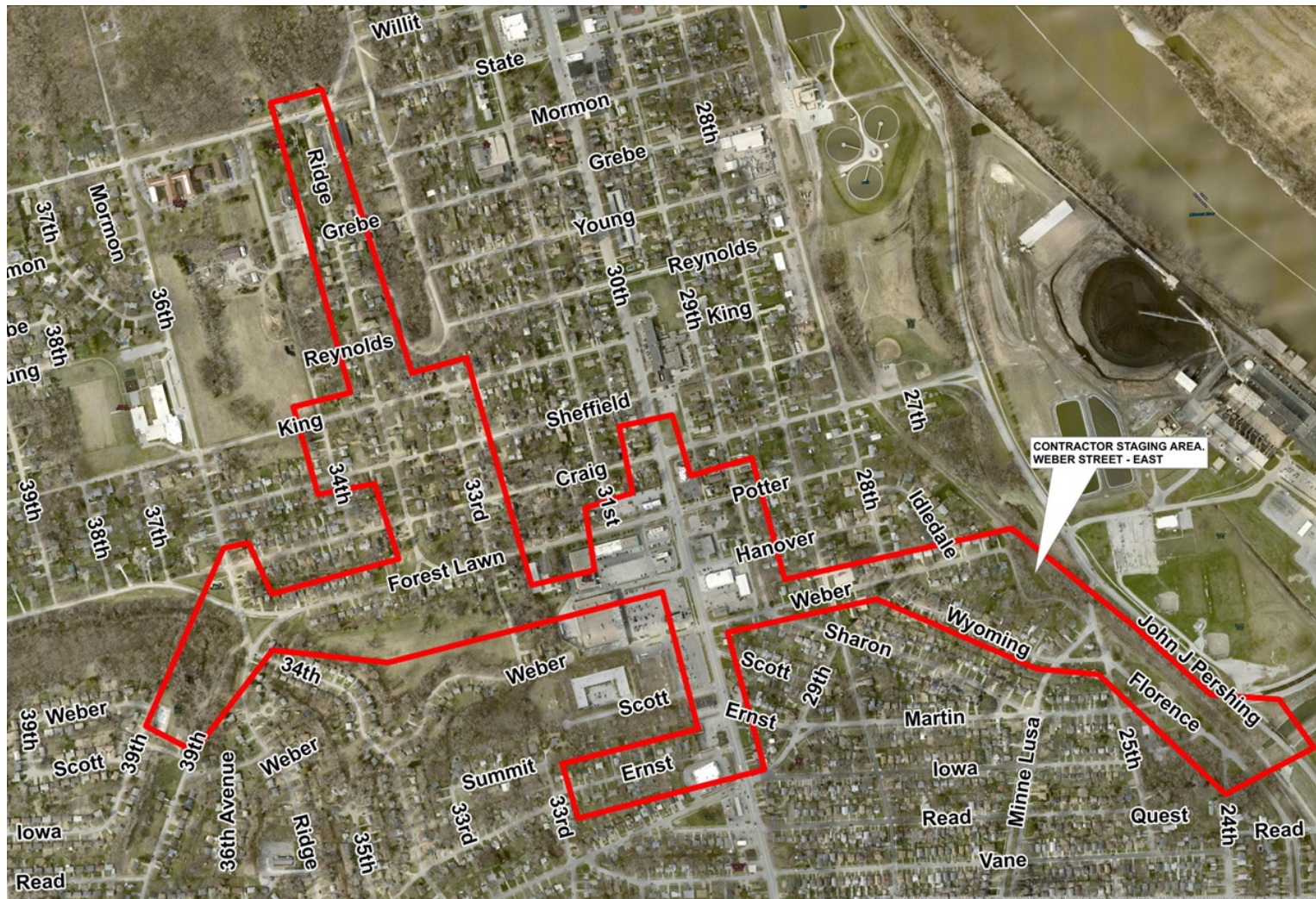
# Forest Lawn Construction Overview

# Project Goals

- Separate the Sewers to Reduce Combined Sewer Overflows
  - Improves water quality of local waterways
  - Reduces backups in basements
  - Improves stormwater collection
  - Reduces odor
- Reuse Existing Infrastructure
  - Use the existing system where appropriate
  - Save time, money, and disruptions
- Improve Other Public Infrastructure
  - Roadway, sidewalk, and ADA ramp improvements
  - Stormwater capacity improvements



# Project Extents





# Project Scope: Storm Sewer

- 13,000 linear feet of new storm sewer
- 96-inch tunnel installation along Weber Street east of 29<sup>th</sup> Street
- Reconstruction of the Minne Lusa outfall
- 39<sup>th</sup> Street outfall restoration



# Project Scope: Sanitary Sewer

- 7,500 linear feet of new sanitary sewer
- Two trenchless pipe installations across N. 30<sup>th</sup> Street to limit traffic disruptions





# Project Scope: Pavement Replacement

- 2.5 miles of full width street replacement
- 110 curb ramp replacements
- 8,000 linear feet of sidewalk replacement



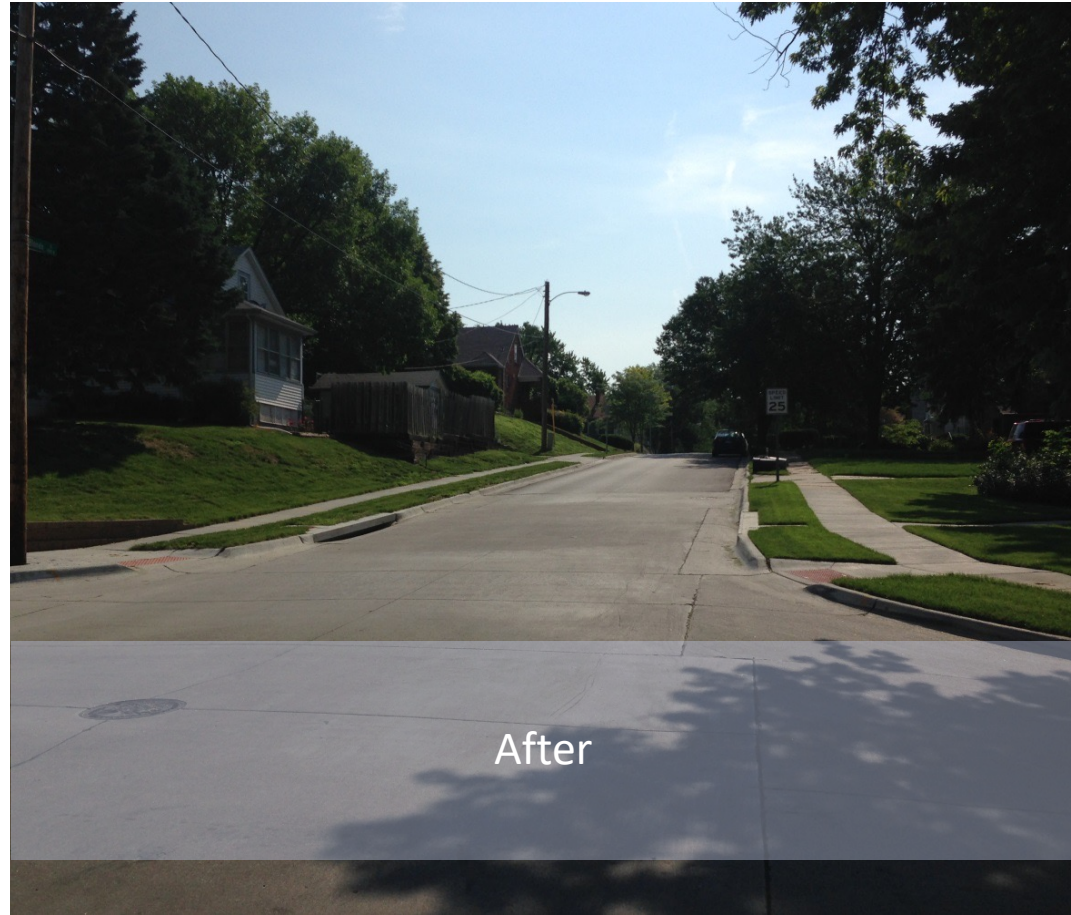
# What to Expect

- Temporary lane/street closures and traffic disruptions
- Large equipment creating noise and dusty conditions
- Temporary restricted access to building fronts





# What to Expect





# Construction Schedule

- Begin Construction March 2023
- 30th Street and east of 30th Street: March 2023 through summer of 2024
- West of 30th Street: Remainder of 2024 though fall of 2025
- Final Completion September 2025

# Project Contacts

## City Representatives

Jesse Ayala – City Construction Manager

(402) 444-5220

[Jesse.Ayala@cityofomaha.org](mailto:Jesse.Ayala@cityofomaha.org)

Tim Papstein – City Project Manager

(402) 444-3590

[Tim.Papstein@cityofomaha.org](mailto:Tim.Papstein@cityofomaha.org)

## Contractor

Brian Sorensen – Roloff Construction Project Manager

(402) 699-4522

[brains@rolloffinc.com](mailto:brains@rolloffinc.com)

## Consultant

Steve Stuempfig – Burns and McDonnell Project Manager

(262) 370-3856

[sstuempfig@burnsmcd.com](mailto:sstuempfig@burnsmcd.com)

# For More Information

**Project Website**  
**[OmahaCSO.com](http://OmahaCSO.com)**

**Program Information Line**  
**(402) 341-0235**

**E-mail**  
**[info@OmahaCSO.com](mailto:info@OmahaCSO.com)**