The background of the slide features a photograph of a city skyline, likely Omaha, with several tall buildings. In the foreground, there is a river with two white swans swimming. A blue curved line separates the image from the text on the right.

Cole Creek CSO 204 Sewer Separation *Phase 2 Final Design*

60% Design Public Meeting
January 26, 2017

Presenters:

Linda Lovgren, Lovgren Marketing Group
Kurt Hassler, GBA



Meeting Agenda

- Project Team Introduction

Linda Lovgren, Lovgren Marketing Group

- Omaha CSO Program Overview

Linda Lovgren, Lovgren Marketing Group

- Project Overview

Kurt Hassler, GBA

- Questions and Concerns Discussion



Project Team Introduction



Project Team

- Tim Papstein, City Project Manager
- Amit Shrivastava, PMT Project Coordinator
- Emily Holtzclaw, PMT Compliance Coordinator
- Linda Lovgren, Public Involvement Facilitator
- Kurt Hassler, Project Team Project Manager
- Sue Marino, Project Team Engineer

The logo for GBA, consisting of the letters "GBA" in a bold, red, sans-serif font.The logo for Lovgren Marketing Group, featuring a stylized red and blue graphic above the text "Lovgren Marketing Group" in a blue, serif font.The logo for ehrhart griffin & associates, featuring a stylized "eg" in blue and black, followed by the text "ehrhart griffin & associates" in a blue, sans-serif font.The logo for Thiele Geotech Inc, featuring a stylized "TG" in green and blue, followed by the text "Thiele Geotech Inc" in a green, sans-serif font.The logo for Associated Engineering Inc., featuring the text "Associated Engineering Inc." in a blue, serif font, with a small graphic of a bridge and water below it.The logo for TWR, featuring the letters "TWR" in a large, blue, sans-serif font with a reflection effect below.The logo for AECOM, featuring the letters "AECOM" in a bold, black, sans-serif font.The logo for CSO!, featuring the text "CSO!" in a large, white, sans-serif font, with "Clean Solutions for Omaha" in a smaller, white, sans-serif font below it.



Omaha CSO Program Overview



Challenges Facing Omaha

- Meeting the increased requirements of the federal Clean Water Act
- Balancing the following needs:



New Consent Order Timeline



Opportunities & Benefits

- Reduce overflows of raw sewage to our streams; improve water quality
- Continue our efforts to eliminate sewer backups into basements
- Replace aging sewer, gas, water and street infrastructure
- Improve drainage and flooding

Major Elements of Final Long Term Control Plan



Underground Storage Tanks



Deep Conveyance Tunnel



Green Solutions



Targeted Sewer Separation

Funding the Program

Financed with 30-year bonds

Funded with sewer fees



The diagram features a dark purple circle on the left containing the text "All area customers". To the right of this circle are three horizontal bars of different colors: dark green, light green, and blue. Each bar contains a text description of a program outcome. The bars are stacked vertically, with the dark green bar at the top, the light green bar in the middle, and the blue bar at the bottom.

**All area
customers**

Contribute to the overflows

Benefit from improvements
to regional water quality

Will help fund the improvements

Public Participation



www.OmahaCSO.com



CSO Display



CSO Hotline
402-341-0235

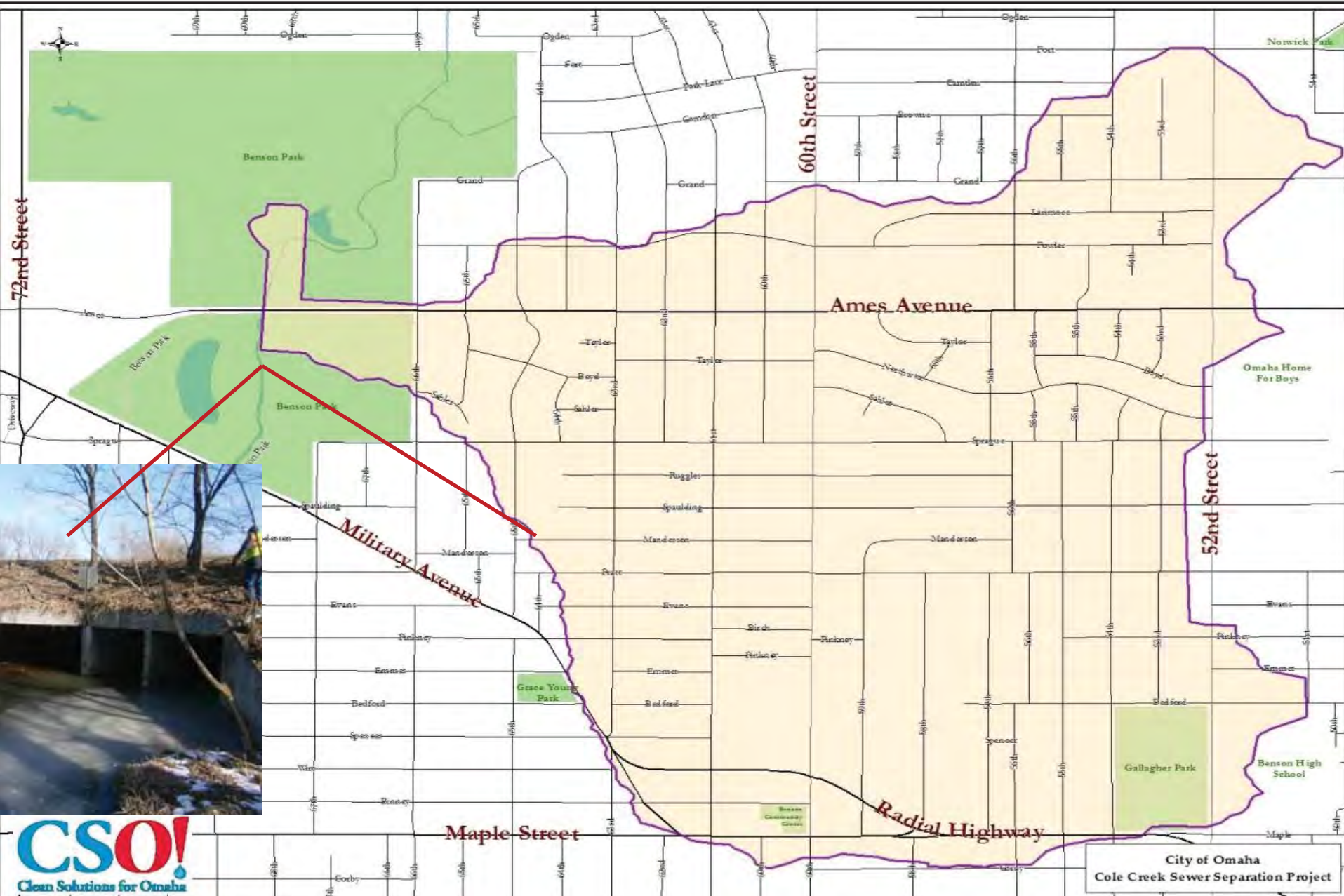


Project Overview

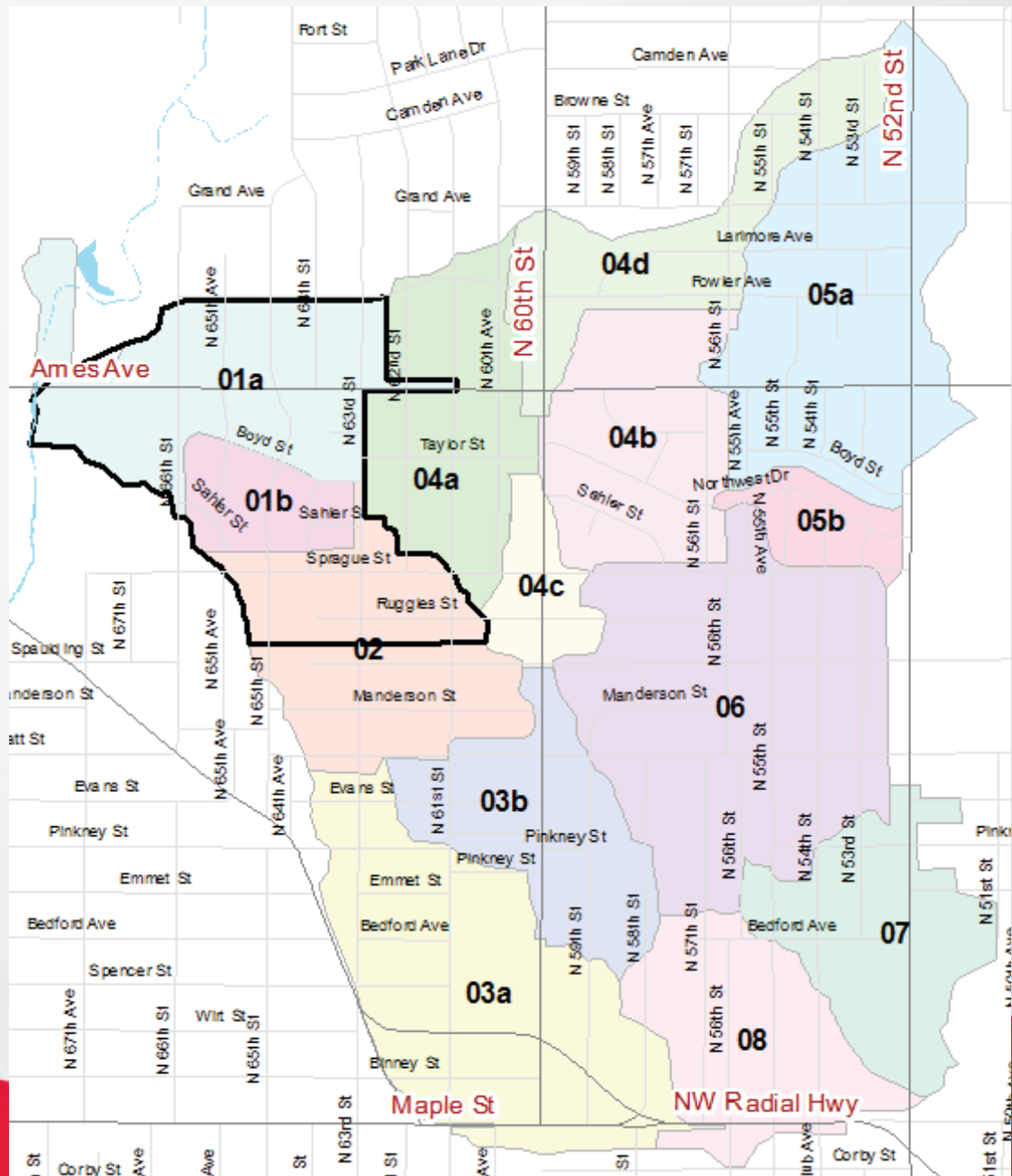
Disclaimer:

The information shown herein is preliminary in nature. All proposed facilities, including sewer pipe sizes and specific locations, are subject to change during utility coordination and finalization of the design.

Study Area

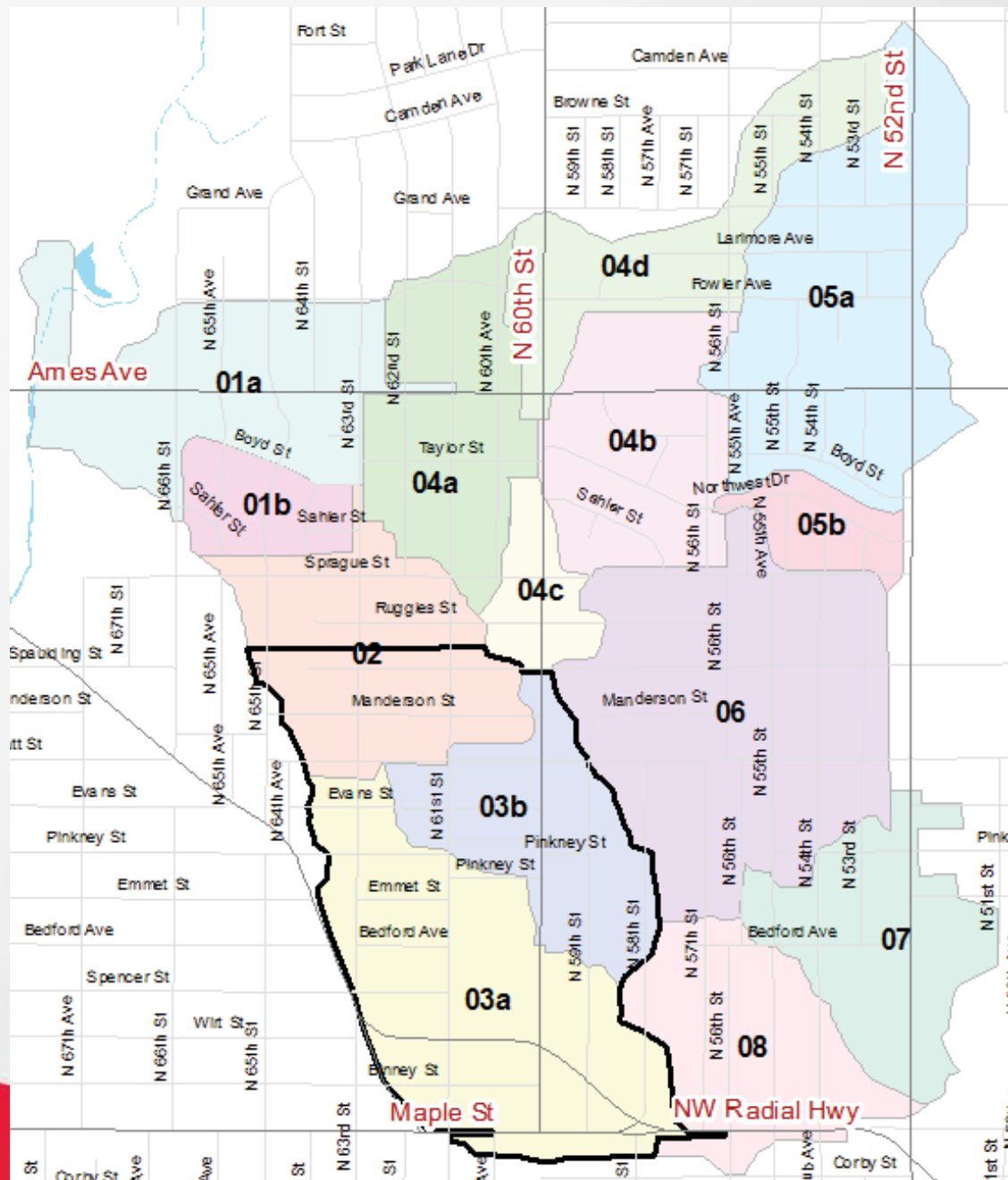


Phase 1

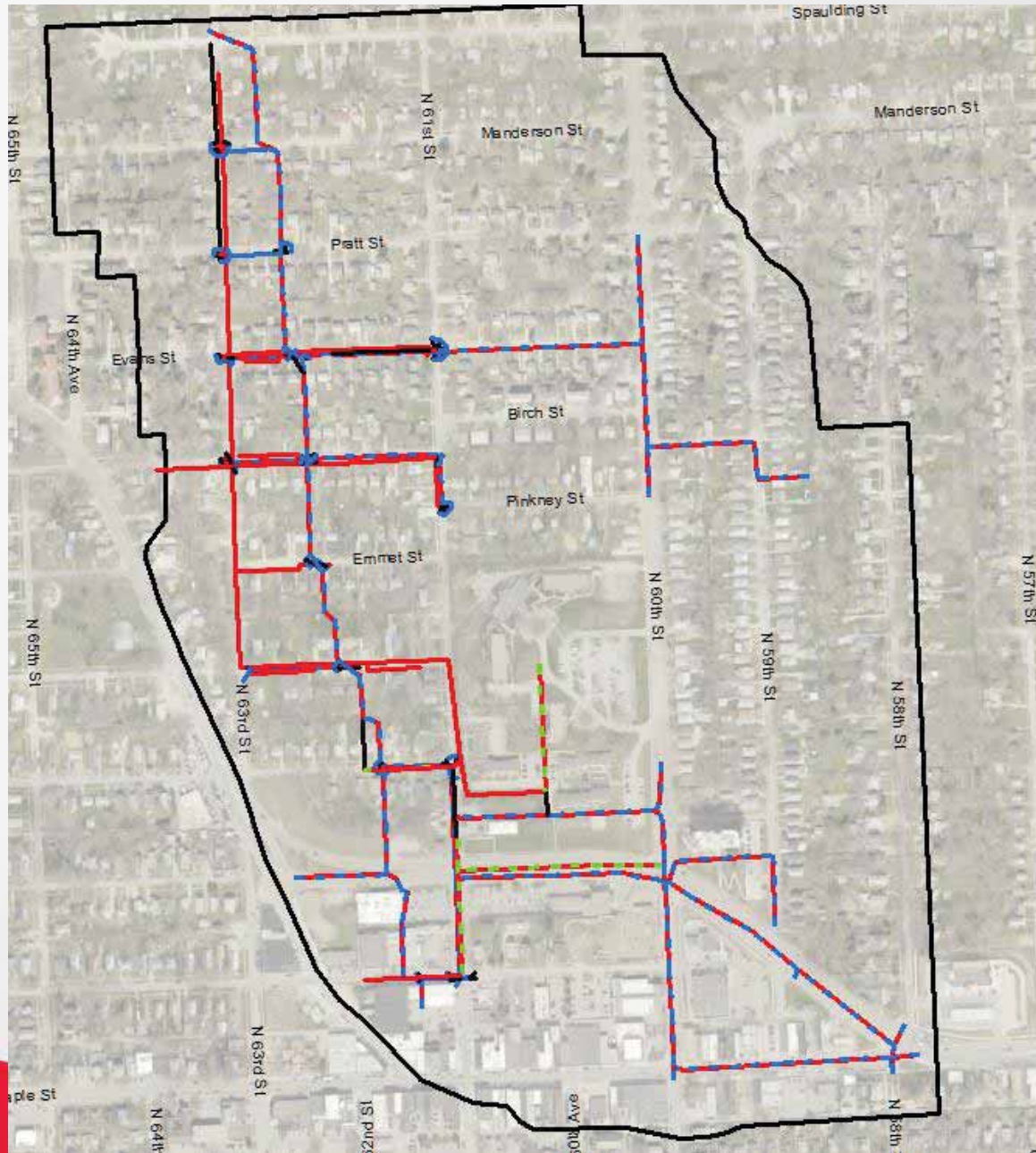


CSO!
Clean Solutions for Omaha

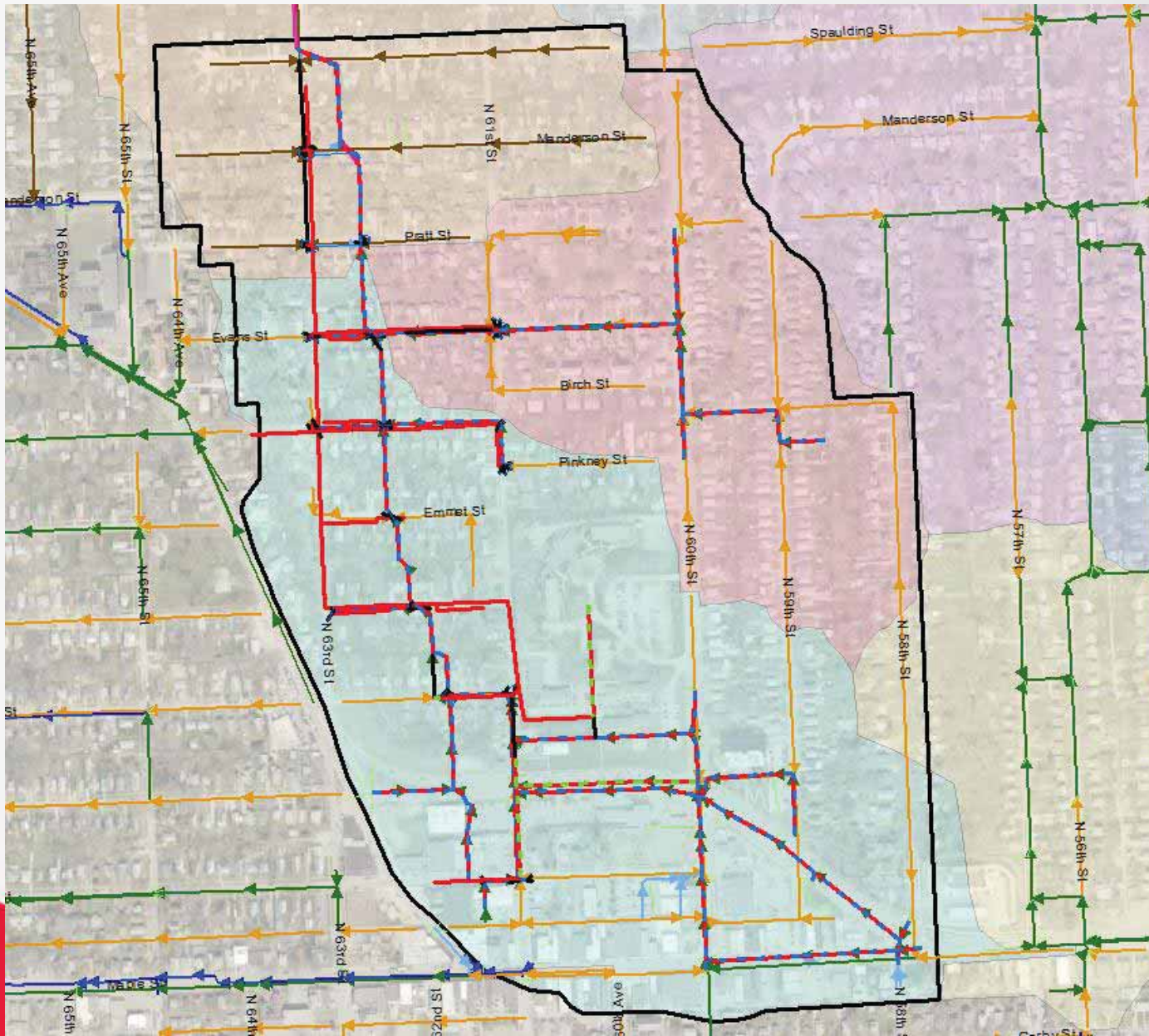
Phase 2



Phase 2



Manhole Rehabilitation

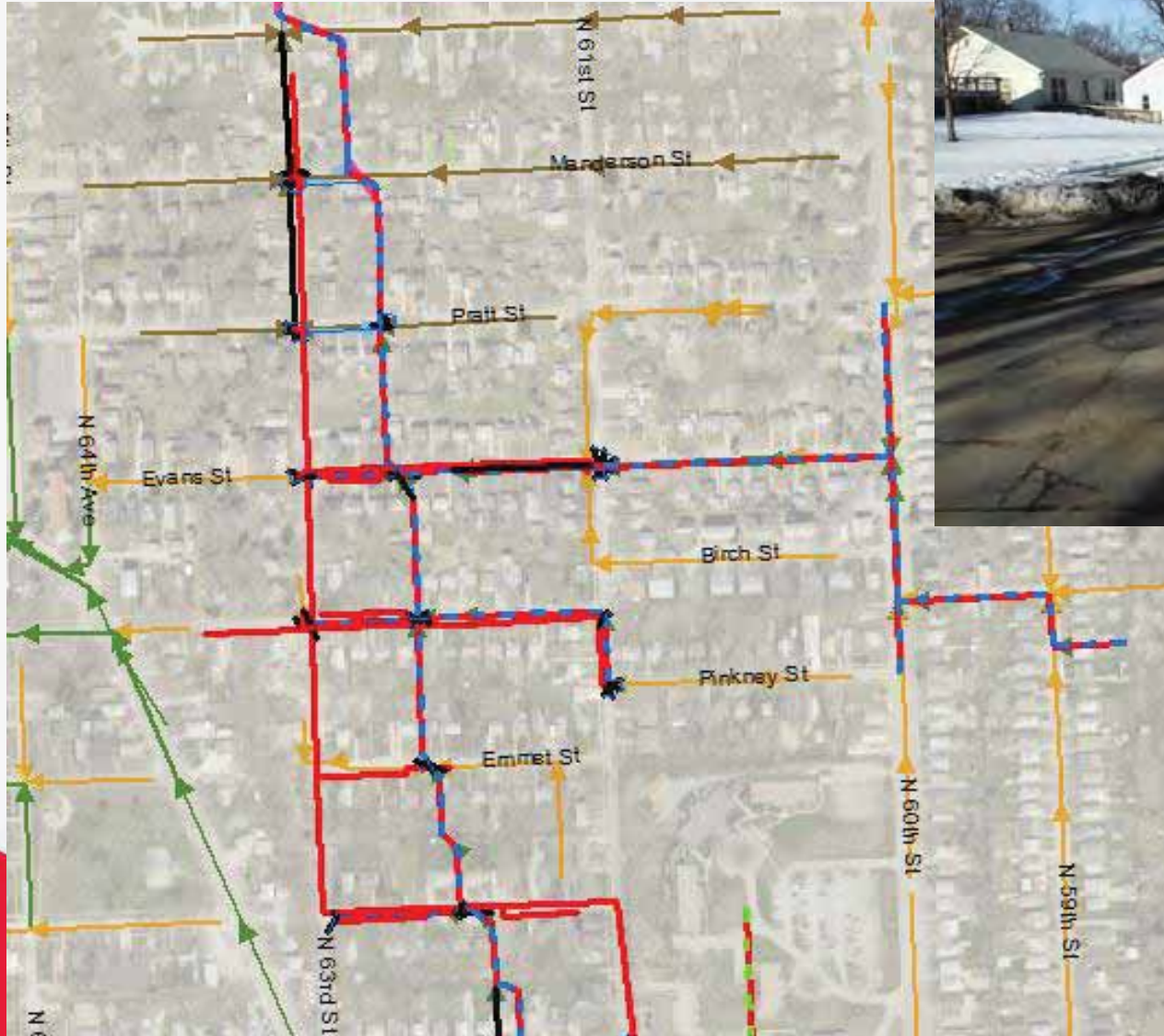


Manhole Rehabilitation



63rd Street Corridor

Sanitary Sewer Relief Interceptor

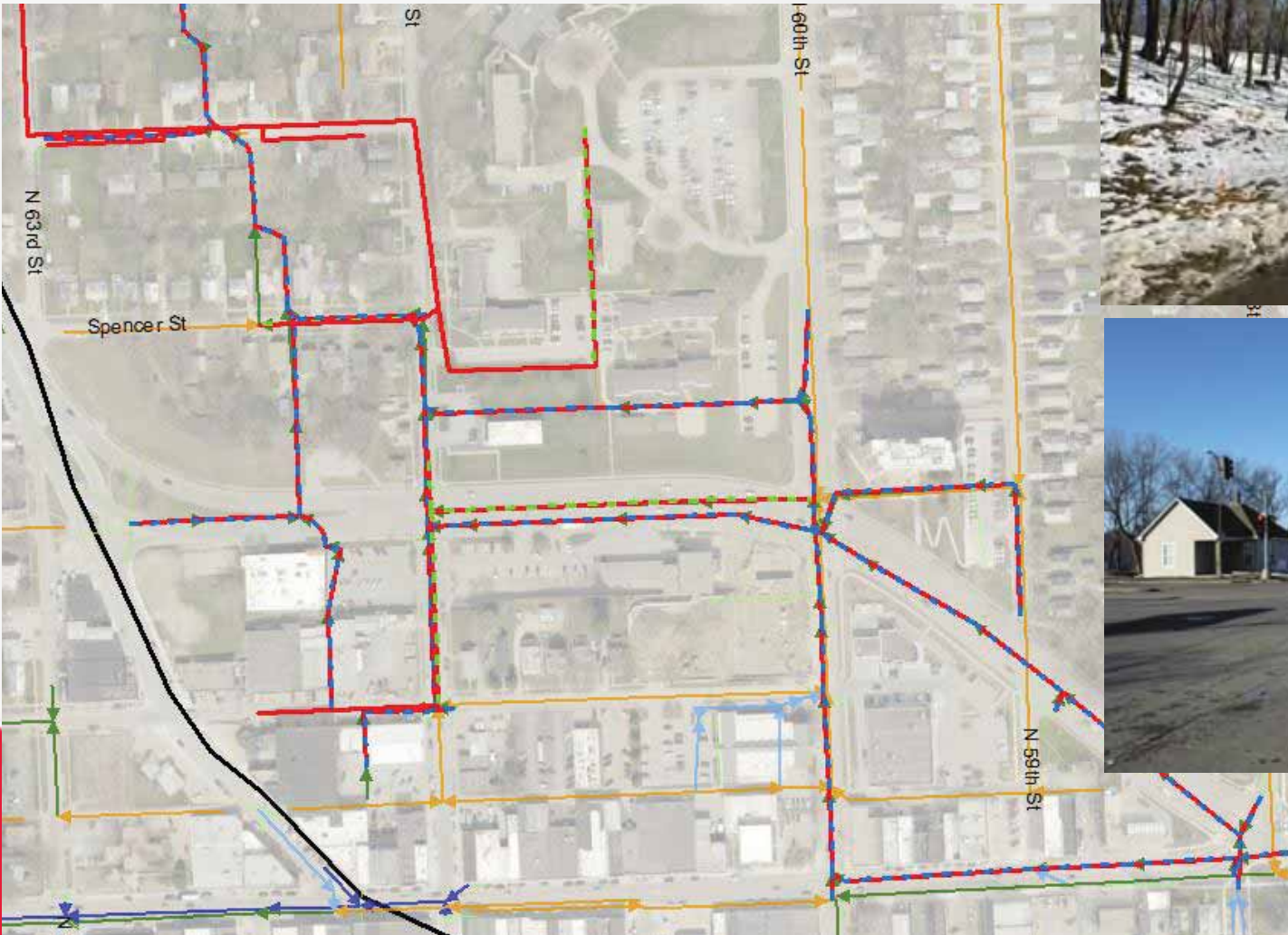


Bedford Avenue Corridor Sanitary Sewer Relief Interceptor



61st Street Corridor

Sanitary Sewer Relief Interceptor



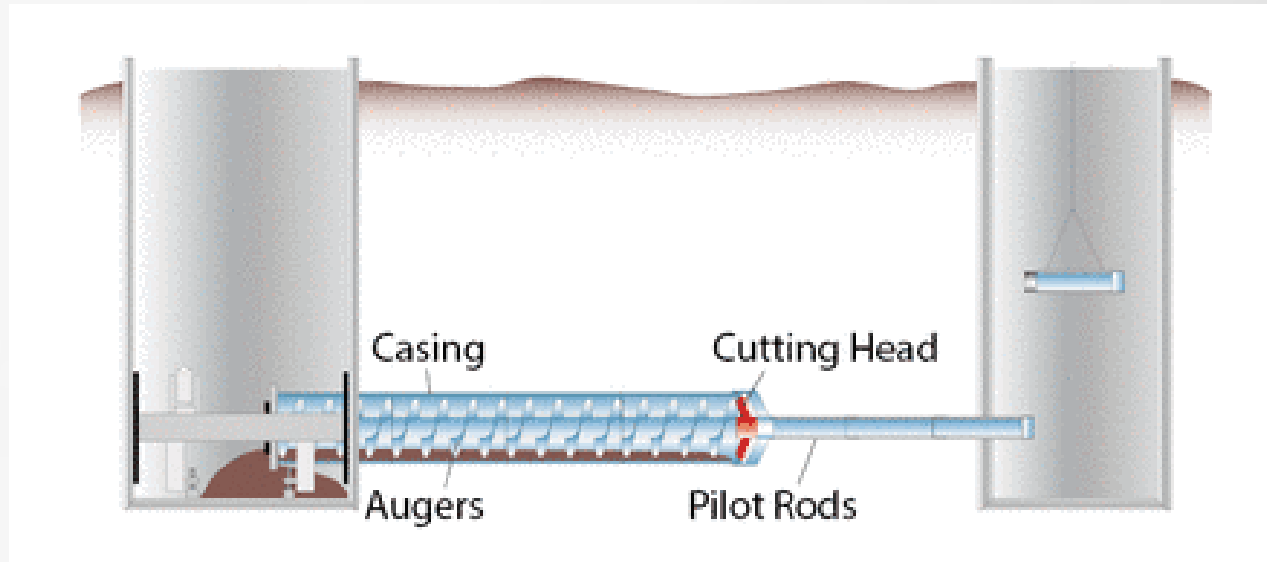
Private Sewer Lateral Relocations



Sewer Construction – Open Cut



Sewer Construction – Trenchless

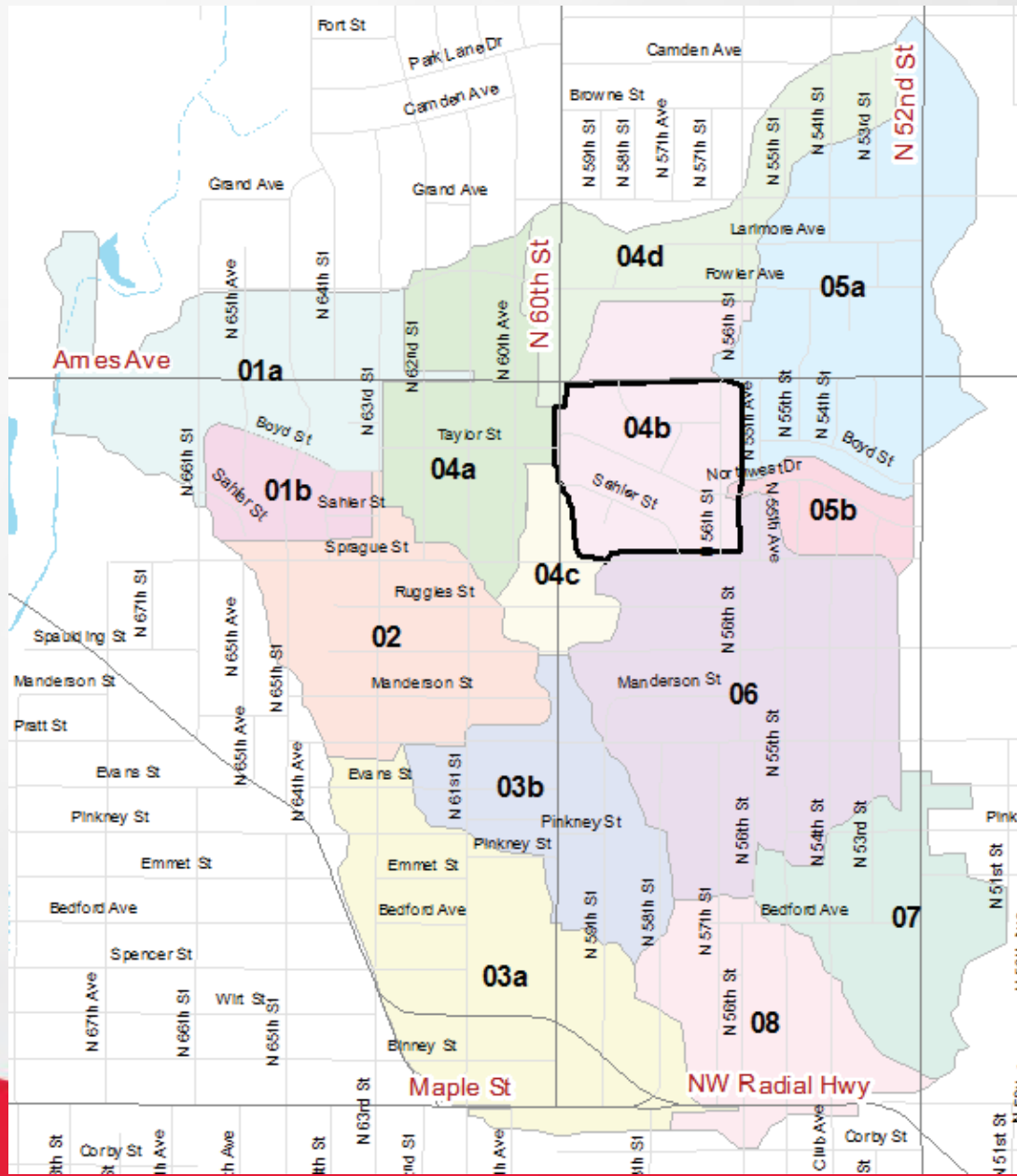


Phase 2: Anticipated Schedule

- **Complete final design**
 - August 2017
- **Bid construction project**
 - Early 2019
- **Construction begins**
 - Spring 2019 (Funding Dependent)
 - Utility work may start sooner
- ***Future phases***
 - *Phases 3-6, Sequenced through 2027*

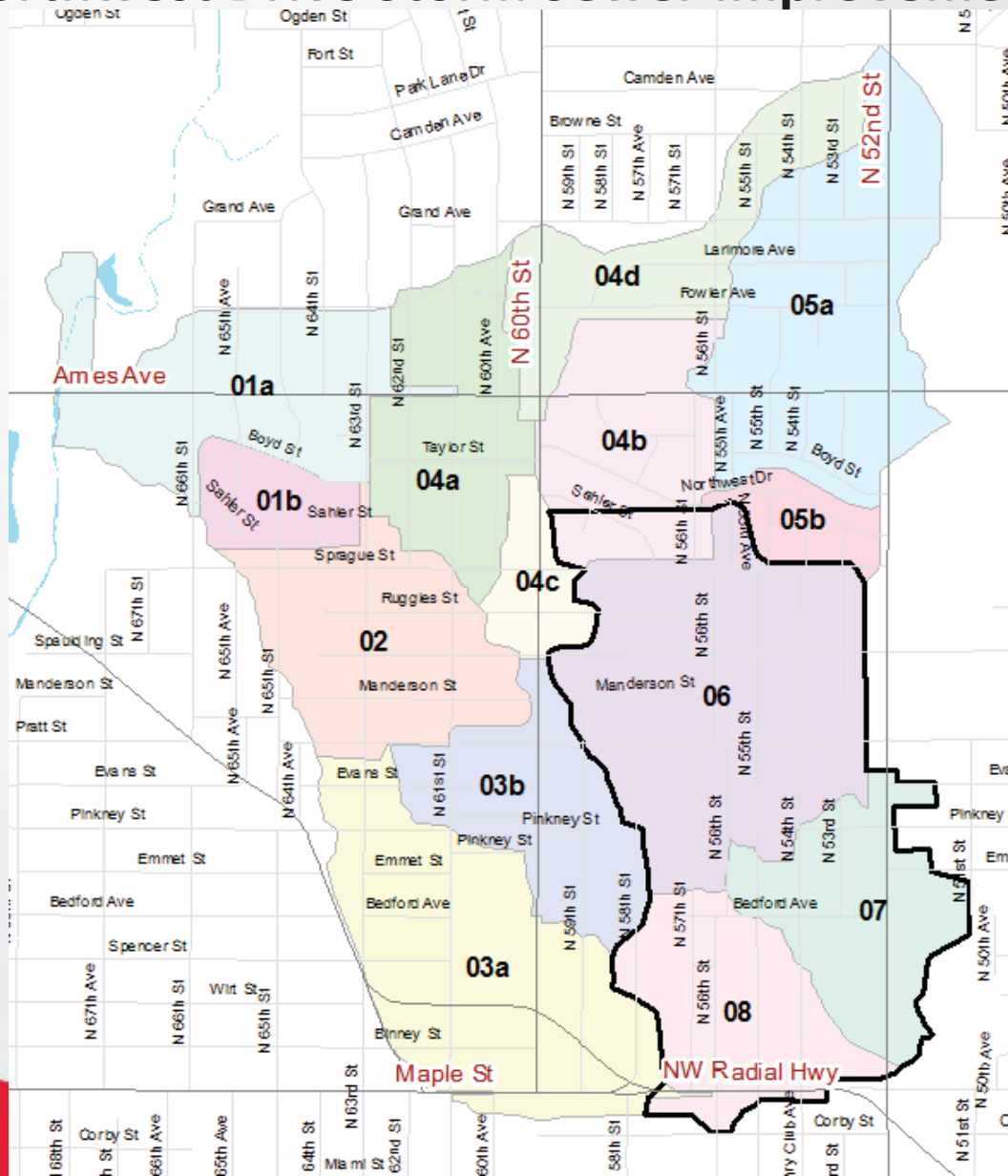
Phase 3

East Side Separation and Rehabilitation



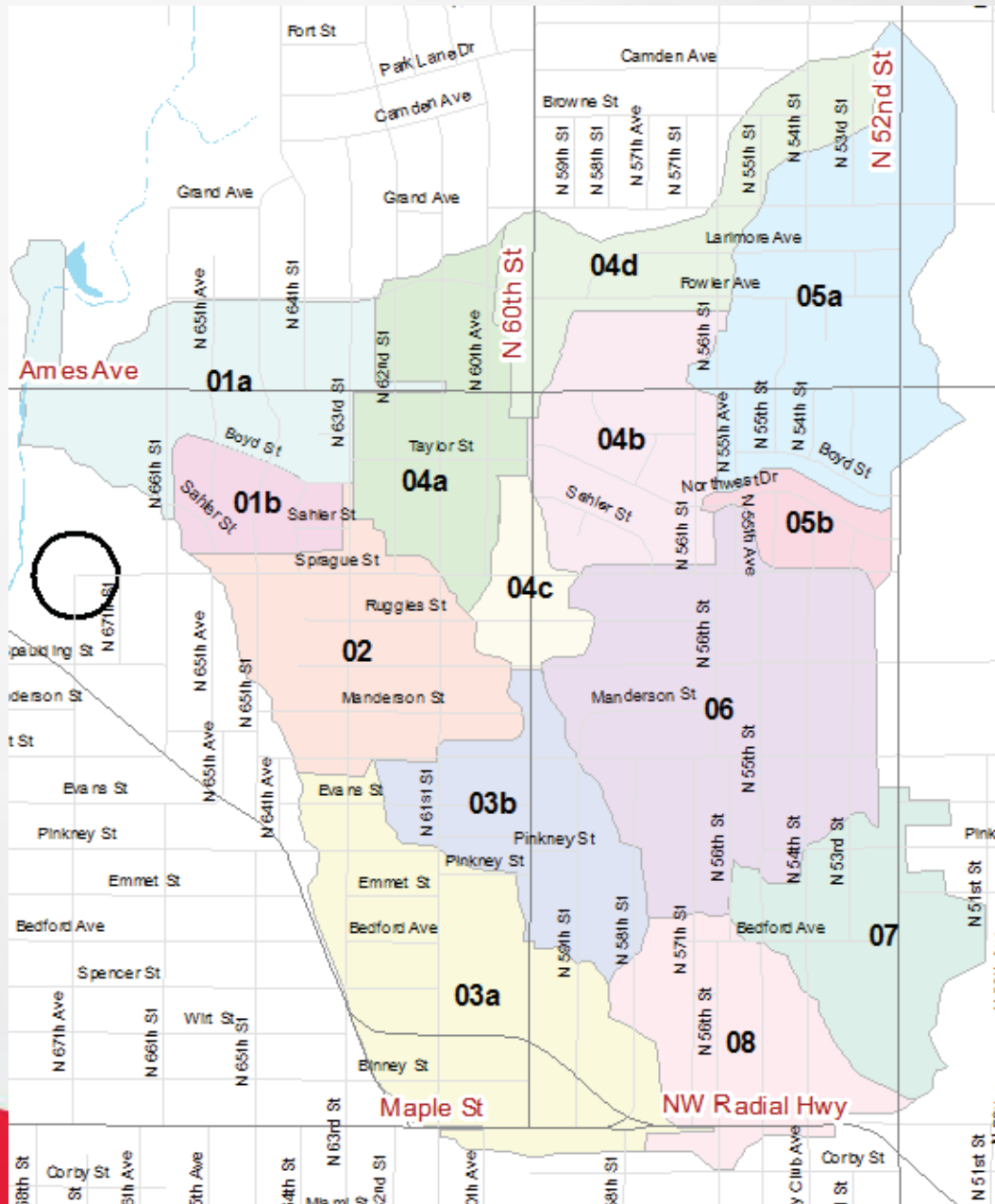
Phase 4

Taylor Street Sanitary Sewer Relief Interceptor Northwest Drive Storm Sewer Improvements



Phases 6

Storage Tank (If Necessary)





Questions & Concerns Discussion

Contact Us

- Web Site: www.omahacso.com
- CSO Hotline: 402.341.0235
- Tim Papstein, City Project Manager
Tim.Papstein@cityofomaha.org
- Kurt Hassler, Project Manager
khassler@gbateam.com
- Linda Lovgren, Public Involvement Facilitator
lovgren@lovgren.com